



YAU HING (HK) CO., LTD. 有興(香港)有限公司

2013



# Specializing

in Plastic accessories and product design

專業生產塑膠配件及產品設計服務



香港有興製品  
YAU HING HONG KONG

**YHK**® *Our new brand*

One Stop Services from Design to Manufacture





Our clients are all around the world,  
e.g. China, Hong Kong, Europe,  
United States, Japan, Southeast Asia,  
and Middle East, etc.



# Global expertise

Leading & professional manufacturer  
of plastic products worldwide



Yau Hing (Hong Kong) Company Limited have been designing and manufacturing plastic accessories and products for more than 20 years since 1991. Our company is an ISO9001:2008 and GMC (Global Manufacturer Certificate) accredited professional manufacturer of plastic products in Hong Kong and China Mainland. We specialize in dealing with different kinds of comprehensive plastic accessories and products, e.g. Accessories of garments, bags and luggage, Plastic bags, Cling film, Water bottles, and Plastic containers, etc. All of our products can meet the SGS standard requirements, such as FDA, ROHS, PHTHALATE Free (7P), EN71, REACH and PAHs. We have our factory in Shenzhen and Office in Hong Kong. Our factory occupied over 12,000sqm, over 100 staffs equipped over 60 machineries including injection moulding machines, blow moulding machines, Plastic bag film blowing machines, and R&D department, etc. Our mission is to bring outstanding design, good quality and quick shipment to our customers with the objective of making our customers more competitive in their market place.

有興(香港)有限公司創立於1991年，是一間ISO9001:2008國際質量管理體系認證的公司。專業生產各類旅行袋、箱包、製衣塑膠扣具配件，包括手挽、車架(拉幹)、車輪(箱包輪)等，以及PE水樽、飯盒、衣架、拉伸膜和膠袋等其它塑膠產品，品質擁有SGS認證。深圳自設廠房，有注塑部、膠袋部及工模具部等部門，佔地面積超過12,000平方米，有100多名員工。已有20年歷史的有興，擁有豐富的塑料製品生產及管理經驗，完善的管理架構，保證起貨快捷、交貨準時、價格合理、態度誠懇、誠信為本。為求在競爭激烈的環境中，努力為客戶創造市場優勢。

自1991年起，有興憑著一支經驗豐富的技術團隊及良好的質量管理，取得了良好口碑。我們的客戶遍布全世界各地，包括美國、加拿大、英國、東南亞及南美洲國家等。

並且，我們能為客戶提供一站式產品開發服務，由設計，生產到送貨，均由本公司之專業人員一手包辦。



ISO9001: 2008



GMC (環球生產商認證)





**Comprehensive plastic accessories & product manufacturer, since 1991**

Established in Hong Kong in 1991, Yau Hing is led by an experienced team of designers, engineers and technicians. With our comprehensive quality management system and design capability, we have achieved an excellent reputation among our customers. Our clients are all around the world, e.g. China, Hong Kong, Europe, United States, Japan, Southeast Asia, and Middle East, etc. Our products are widely used in backpacks, luggage, garments, sports products, household products, promotional gifts, tactical systems, electronic products and other plastic related fields. We also offer OEM/ ODM and Custom-made services.



## 目錄 Table of Content

04 - 09	插扣 Buckle Side Release	39	包邊條 Luggage Guard
10	插扣 Buckle Front Release	40	腳座 Bag & Luggage Foot Pad
11	易開扣 Buckle Quick Release	45 - 46	織帶手挽 Soft Handle
12	擰扣及書包扣 Buckle & Twist Tuck & Twist	47	行李牌及掛牌 Luggage & Label Tag
13	掛帶安全扣 Buckle Strap Buckle	48 - 50	手挽 Hard Handle
14	壓扣及伸縮扣 Buckle Cam & Slide Buckle	51 - 53	行李輪 Luggage Wheel
15 - 19	勾扣 Hook Snap & Bag Hook	54 - 69	車架/拉桿 Extendable Handle / Trolley
20 - 24	方扣及D扣 Loop & Ring	70 - 71	其他 Others
25 - 26	日扣 Glider	72 - 73	旗桿配件 Flag Accessories
27 - 28	梯扣 Strap Adjuster & Divider	74 - 75	運動水樽 Sports / Squeeze Bottle
29	繩扣及雞眼 Cord Lock & Eyelet Ventilator	76 - 77	塑料袋 Plastic Bag
30 - 31	繩扣 Cord Lock	78 - 81	索引 Index
32 - 34	吊鐘及繩尾夾 Cord End & Zipper Pull	82 - 83	主要材質之特性與用途一覽表
35	帶尾夾 End Strap		Characters and Applicable Fields
36	織帶夾及腰帶扣 Keep Loop & Belt Clip	84 - 85	國際安全標準
37 - 38	肩墊 Patch Tab		International Safety Standard



Buckle Side Release

Buckle Side Release

雷克插扣 Leck Buckles

Y-1200 Y-1201A Y-1203A Y-1204



3/4" (19mm) POM

1" (25mm) POM

1 1/2" (38mm) POM

2" (51mm) POM

圓風插扣 New Buckles

Y-1000 Y-10011 Y-1002



3/4" (19mm) POM

1 1/8" (28.5mm) PA

1 1/4" (32mm) PA

拱形插扣(厚身) Arch Buckles (For Heavy Duty)

Y-1604B Y-165B Y-166B Y-167B



3/8" (9.5mm) POM

5/8" (16mm) POM

3/4" (19mm) POM

1" (25mm) POM

傳統插扣 Classic Buckles

Y-100 Y-101 Y-102 Y-103 Y-104



3/4" (19mm) POM/PA/PP

1" (25mm) POM/PA/PP

1 1/4" (32mm) POM

1 1/2" (38mm) POM

2" (51mm) POM

機械插扣 Mechanic Buckles

Y-110 Y-111 Y-112 Y-113 Y-114



3/4" (19mm) POM

1" (25mm) POM

1 1/4" (32mm) POM

1 1/2" (38mm) POM

2" (51mm) POM

圓邊插扣 Round Sided Buckles

Y-120 Y-121 Y-122 Y-123 Y-124



3/4" (19mm) POM

1" (25mm) POM

1 1/4" (32mm) POM

1 1/2" (38mm) POM

2" (51mm) POM





肥仔插扣 Fazy Buckles

Y-140 Y-141 Y-142 Y-143 Y-144



蛙形插扣 Frog Buckles

Y-190 Y-191 Y-192 Y-193 Y-194



單面插扣 Single-Side Buckles

Y-1605 Y-160 Y-161 Y-162 Y-163 Y-164



雙較插扣 Double Adjust Buckles

Y-195 Y-196 Y-197 Y-198



雙較單面插扣 Double Adjust Buckles

Y-160A Y-161A Y-162A Y-163A Y-164A



插扣 (加膠片) Buckles With Changable Middle Plate

Y-195A Y-196A Y-197A Y-198A







Buckle Side Release

Buckle Side Release

有孔插扣 Hole Buckles

Y-1105 Y-1106 Y-1107 Y-1108



3/4" (19mm)  
POM

1" (25mm)  
POM

1 1/4" (32mm)  
POM

1 1/2" (38mm)  
POM

蛙形插扣 Frog Buckles

Y-1910 Y-1911 Y-1912 Y-1913



3/4" (19mm)  
POM

1" (25mm)  
POM

1 1/4" (32mm)  
POM

1 1/2" (38mm)  
POM

插扣 Buckles

Y-165 Y-166



5/8" (16mm)  
POM

3/4" (19mm)  
POM

拱形插扣 Arch Buckles

Y-136



3/4" (19mm)  
POM

插扣 Buckles

Y-1101 Y-1102 Y-1103



1" (25mm)  
POM or PA

1 1/4" (32mm)  
POM or PA

1 1/2" (38mm)  
POM or PA

插扣 Buckles

Y-153 Y-154



1 1/2" (38mm)  
POM

2" (51mm)  
POM

火箭插扣 Rocket Buckles

Y-1190 Y-1191 Y-1193



3/4" (19mm)  
POM

1" (25mm)  
POM

1 1/2" (38mm)  
POM

密碼插扣 Code Buckles

Y-159



2" (51mm)  
POM





Buckle Front Release

Buckle Quick Release

萬字插扣 Buckles

Y-130 Y-134 Y-131 Y-132 Y-139



3/4" (19mm) POM

1" (25mm) POM

1" (25mm) POM

1" (25mm) POM

1 1/2" (38mm) POM

轉插扣 Rotation Buckles

Y-170 Y-171 Y-172 Y-173



3/4" (19mm) POM

1" (25mm) POM

1 1/4" (32mm) POM

1 1/2" (38mm) POM

插扣 Buckles

Y-182



1/2" (13mm) POM

插扣 Buckles

Y-185 Y-185B



3/4" (19mm) & 1" (25mm) POM / PA

1" (25mm) POM

易開扣 Easy Buckle

易開扣 Easy Buckle

Y-133



1" (25mm) / POM

Y-135



Y-135C Y-135D

1" (25mm) / PP

易開扣 Easy Buckle

磁石插扣 Magnet Buckle

Y-137



1" (25mm) / PP

Y-716



1" (25mm) / PP





扣制 **Slot Buckle**

書包扣 **Tuck Buckles**

Y-642



L78mm x W49mm / PA

Y-710

Y-711

Y-712



1" x 1 1/2" (25 x 38mm) / POM

L71xW35xT22mm / POM

L43xW37xT15mm / POM

小型插扣 **Push Buckle**

魚仔插扣 **Fish Buckles**

Y-180



5/16" (8mm) / POM

Y-181



3/8" (9.5mm) / POM

Y-186



5/16" (8mm) / POM

Y-186A



3/8" (9.5mm) / POM

擰制 **Twist Buckle**

擰制 **Twist Buckles**

Y-645



2 1/4" x 2 1/4"  
(L57mm x W57mm)  
PA

Y-720



L38xW12mm / POM

Y-721



L33xW22mm / POM

Y-184



5/16" (8mm) / POM

Y-183



3/8" (9.5mm) / POM

Y-183B



1/2" (13mm) / POM

Y-187



3/4" (20mm) / POM

Y-189



1" (25mm) / POM

Buckle & Twist Tuck & Twist

Buckle Strap Buckle





Buckle Cam & Slide Buckle

壓扣 **Cam Buckles**

**Y-700**



3/4" (19mm) / POM

**Y-701**



1" (25mm) / POM

**Y-703**



1 1/2" (38mm) / POM

**Y-704**



2" (51mm) / POM

壓扣 **Cam Buckles**

**Y-700A**



3/4" (19mm) / POM

**Y-702A**



1 1/4" (32mm) / POM

伸縮扣 **Rigging Buckles**

**Y-740**

Webbing: 1/2" (13mm)  
Strap: L83xW5xT3mm  
Buckle: T8mm  
PA



**Y-741**

Strap: L129 x W20 x T3.5mm / PVC  
Buckle: L50 x W33 x T11mm / POM

HOOK Snap & Bag Hook

鷹咀扣  
Back Pack Hook

Y-3442



1/2" (13mm); L20xW20mm / PA

潛水扣  
Diving Hook

Y-348



L36xW11xT2.5mm / POM

爬山扣  
Carabiner

Y-3443



L65xW41xT6.5mm / POM

S勾  
S Hook

Y-345A



L87xW45 Φ7.5mm / PP

四方貼勾  
Stick Hook

Y-320



L30xW30xD22mm / ABS

貼牆壁勾  
Wall Hook

Y-322



H: 42mm L Hook: 23mm  
L Punch in: 24mm / PP

掛衣袋勾  
Hook

Y-349



L120mm / PP





勾扣 **Snap Hook**

Y-300 Y-301 Y-302 Y-302A Y-303 Y-304



3/4" (19mm)  
POM

1" (25mm)  
POM

1 1/4" (32mm)  
POM



1 1/4" (32mm)  
POM

1 1/2" (38mm)  
POM

2" (51mm)  
POM

圓骨轉勾扣 **Swivel Snap Hooks**

Y-331 Y-332 Y-333 Y-334



1" (25mm)  
POM

1 1/4" (32mm)  
POM

1 1/2" (38mm)  
POM

2" (51mm)  
POM

轉勾扣 **Swivel Snap Hooks**

Y-310 Y-311 Y-312 Y-313 Y-314



3/4" (19mm)  
POM

1" (25mm)  
POM

1 1/4" (32mm)  
POM

1 1/2" (38mm)  
POM

2" (51mm)  
POM

雙轉勾扣 **Double Swivel Snap Hooks**

Y-351 Y-352 Y-353 Y-354



1" (25mm)  
POM

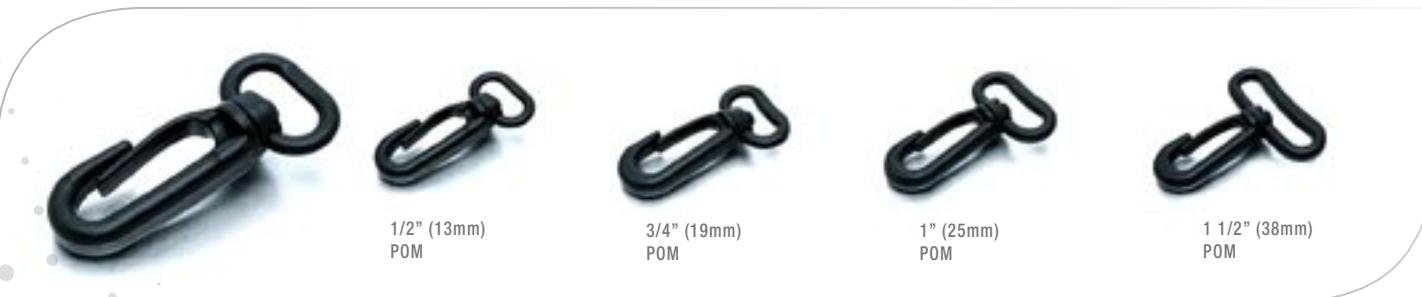
1 1/4" (32mm)  
POM

1 1/2" (38mm)  
POM

2" (51mm)  
POM

圓骨轉勾扣 **Swivel Snap Hooks**

Y-3300B Y-330B Y-331B Y-333B



1/2" (13mm)  
POM

3/4" (19mm)  
POM

1" (25mm)  
POM

1 1/2" (38mm)  
POM

半圓挂扣 **Semicircle Bag Hooks**

Y-381 Y-382 Y-383 Y-384



1" (25mm)  
POM

1 1/4" (32mm)  
POM

1 1/2" (38mm)  
POM

2" (51mm)  
POM





HOOK Snap & Bag Hook

HOOK Snap & Bag Hook

彈弓雙轉勾扣 Swivel Metal Clip Snap Hooks

Y-370 Y-371 Y-372 Y-373 Y-374



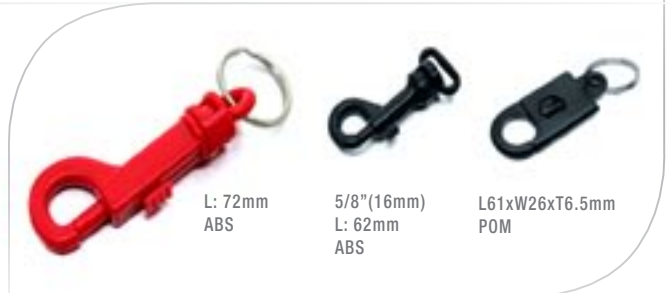
勾扣 Snap Hooks

Y-342 Y-342D Y-342E



鎖匙扣 Key Snap Hooks

Y-340 Y-346 Y-343



雙轉勾扣 Double Swivel Snap Hooks 勾仔 Snap Hooks

Y-361 Y-362 Y-330A Y-333C



勾扣 Ring Snap Hook

Y-341



D扣配勾扣 D Ring With Snap Hooks

Y-342A Y-342B



葫蘆勾扣 Gourd Snap Hooks

Y-347 Y-347A



萬能轉勾扣 Multiway Snap Hook

Y-360



彈弓轉勾扣 Swivel Metal Clip Snap Hook

Y-376



轉勾扣 Swivel Snap Hook

Y-313A



彈弓轉勾扣 Swivel Metal Clip Snap Hook

Y-373A



三角勾 Triangular Hooks

Y-345 Y-345B



繩索勾扣 Cord Hooks

Y-321 Y-344 Y-3440







Loop & Ring

Loop & Ring

新方扣 **Rectangular Loops**

Y-260 Y-261 Y-262 Y-263 Y-264



3/4" (19mm) POM 1" (25mm) POM 1 1/4" (32mm) POM 1 1/2" (38mm) POM 2" (51mm) POM

方扣 **Rectangular Loops**

Y-240 Y-241 Y-2421 Y-242 Y-243 Y-244



3/4" (19mm) POM 1" (25mm) POM 1 1/8" (28.5mm) POM 1 1/4" (32mm) POM 1 1/2" (38mm) POM 2" (51mm) POM

D扣 **D Rings**

Y-221B Y-222B Y-223B



1" (25mm) POM 1 1/4" (32mm) POM 1 1/2" (38mm) POM

高身方扣 **Wide Loop**

Y-241A



1" (25mm) POM

圓通D扣 **D Rings**

Y-280C Y-280B Y-280A Y-281A Y-281B Y-281D



3/8" (9.5mm) POM 1/2" (13mm) POM 3/4" (19mm) POM 1" (25mm) POM 1" (25mm) POM 1" (25mm) POM

Glossy Surface 光面  
1" (25mm) POM

圓通D扣 **D Rings**

Y-282A Y-283A Y-284A Y-270A Y-220A



1 1/4" (32mm) POM 1 1/2" (38mm) POM 2" (51mm) POM 3/4" (19mm) POM 3/4" (19mm) POM

三角扣 **Triangular Loops**

Y-211 Y-212 Y-213 Y-214



1" (25mm) POM 1 1/4" (32mm) POM 1 1/2" (38mm) POM 2" (51mm) POM



Loop & Ring

Loop & Ring

高身 D 扣 D Ring & Loops

Y-270 Y-270B Y-271 Y-272 Y-273 Y-274



3/4" (19mm) POM, 3/4" (19mm) POM, 1" (25mm) POM, 1 1/4" (32mm) POM, 1 1/2" (38mm) POM, 2" (51mm) POM

D 扣 D Ring & Loops

Y-220 Y-221 Y-222 Y-223 Y-224 Y-224A



3/4" (19mm) POM, 1" (25mm) POM, 1 1/4" (32mm) POM, 1 1/2" (38mm) POM, 2" (51mm) POM, 2" (51mm) POM

雙 D 扣 B.D. Rings

Y-251 Y-252 Y-253 Y-253A Y-254



1" (25mm) POM, 1 1/4" (32mm) POM, 1 1/2" (38mm) POM, 1 1/2" (38mm) POM, 2" (51mm) POM

圓骨雙 D 扣 B.D. Rings

Y-291 Y-292 Y-293



1" (25mm) POM, 1 1/4" (32mm) POM, 1 1/2" (38mm) POM

D 扣 B.D. Rings

Y-295A Y-296A Y-296 Y-297 Y-298



3/4" (19mm) POM, 1" (25mm) POM, 1" (25mm) POM, 1 1/4" (32mm) POM, 1 1/2" (38mm) POM

圓通雙 D 扣 B.D. Rings

Y-280 Y-281



3/4" (19mm) POM, 1" (25mm) POM

三角扣 Ring & Loops

Y-255 Y-257



1" (25mm) PA or PP, 1 1/2" (38mm) PA or PP





圓 卷

Loop & Ring

© 2013 Yau Hing (Hong Kong) Co Ltd

### 圓 卷 O Rings

Y-660



Outer:  $\Phi$ 52mm  
Inner:  $\Phi$ 35mm  
PP

Y-661



Outer:  $\Phi$ 13mm  
Inner:  $\Phi$ 7mm  
PP

Y-662



Outer:  $\Phi$ 44mm Inner:  $\Phi$ 27mm  
厚度: T3.7mm  
PP

Y-663



Outer:  $\Phi$ 18.2mm  
Inner:  $\Phi$ 12mm  
POM



日 扣 Glider

© 2013 Yau Hing (Hong Kong) Co Ltd

### 日 扣 Strap Adjusters

Y-230



3/4" (19mm)  
POM

Y-231



1" (25mm)  
POM

Y-232



1 1/4" (32mm)  
POM

Y-233



1 1/2" (38mm)  
POM

Y-232A



1 1/4" (32mm)  
POM

Y-234



2" (51mm)  
POM

### 日 扣 Strap Adjusters

Y-231A



1" (25mm)  
POM

Y-2321



1 1/8" (28.5mm)  
POM

Y-233A



1 1/2" (38mm)  
POM

Y-2300



1/2" (13mm)  
POM

Y-233D



1 1/2" (38mm)  
POM

### 高身日扣(厚身) Strap Adjusters (Thick)

Y-2300F



3/8" (9.5mm)  
POM

Y-2301F



5/8" (16mm)  
POM

Y-2302F



3/4" (19mm)  
POM

Y-2303F



1" (25mm)  
POM

Loop & Ring

Glider



Glider

Strap Adjuster & Divider

厚身日扣/有齒日扣 **Teeth Strap Adjusters**

Y-233B

Y-233E



1 1/2" (38mm)  
POM

1 1/2" (38mm)  
PA

8字形扣 **"8"Shape Strap Adjuster**

Y-2300C



1/2" (13mm)  
POM

T日扣 **Strap Adjusters**

Y-236A

Y-237

Y-237A

Y-238



1" & 1" (25mm)  
POM

1" (25mm) &  
3/4" (19mm)  
POM

1" (25mm) &  
3/4" (19mm)  
POM

3/4" & 3/4" (19mm)  
POM

方日扣 **Multiway Strap Adjusters**

Y-236

Y-239



1" & 1" & 1" (25mm)  
POM

3/4" (19mm) &  
1" (25mm) & 3/4"  
POM

活動拉扣 **Glider**

Y-750



3/4" (19mm); Hole  $\Phi$ 4mm;  
L25 x W21mm  
POM

梯扣 **Strap Adjusters**

Y-200

Y-201

Y-202

Y-203

Y-204



3/4" (19mm)  
POM

1" (25mm)  
POM

1 1/4" (32mm)  
POM

1 1/2" (38mm)  
POM

2" (51mm)  
POM

拱形梯扣 **Curved Strap Adjusters**

Y-205

Y-206

Y-206C

Y-207

Y-208



3/4" (19mm)  
POM

1" (25mm)  
POM

薄身 Slim  
1" (25mm)  
POM

1 1/4" (32mm)  
POM

1 1/2" (38mm)  
POM

鴨咀梯扣 **Strap Adjusters**

Y-205A

Y-206A

Y-206B



3/4" (19mm)  
POM

1" (25mm)  
POM

1" (25mm)  
PA





斜形三方扣 **Multiway Adjuster**

Y-246



1" (25mm) & 2" (51mm) & 3" (76mm)  
POM

三邊方扣 **Trilateral Adjuster**

Y-247



1" & 1" & 1" (25mm)  
PA

活動日梯扣 **Flexible Strap Adjuster**

Y-202A



1 1/4" (32mm)  
POM



繩扣 **Cord Lock**

Y-554

Y-574

Y-454

Y-515A

Y-593



Cord: <math>\Phi 4\text{mm}</math>;  
L24xW22xT9mm  
PP

Cord: <math>\Phi 4\text{mm}</math>;  
L37xW14mm  
PP

Cord: <math>\Phi 5\text{mm}</math>;  
L36xW12mm  
PP

Cord: <math>\Phi 4\text{mm}</math>;  
L23xW9xT6mm  
POM

Cord: <math>\Phi 3\text{mm}</math>; Webbing:  
1/4" (6mm); L23xW12mm  
PA

牛角鈕 **Cord Adjuster**

Y-555

Y-492



L: 1 1/2" (38mm)  
PP



Cord: <math>\Phi 4\text{mm}</math>;  
L24xW21mm  
PP

膠雞眼 **Eyelet Ventilator**

Y-731



$\Phi 22\text{mm}$ ; H5mm  
POM

膠雞眼 **Eyelet Ventilator**

Y-731A



$\Phi 22\text{mm}$ ; H9mm  
POM

有網雞眼 **Eyelet Ventilator**

Y-732



$\Phi 20\text{mm}$ ; H6mm  
POM



繩扣 Cord Locks

Y-453 Y-451 Y-450 Y-459 Y-512



Hole: 6x4mm;  
L15xW12mm  
PP

Hole: 8x5mm;  
L22xW18mm  
PP

Hole: 9x6mm;  
L24xW20mm  
POM

Hole: 8x6mm;  
L23xW17xT8mm  
ABS

Cord:  $\Phi$ 4mm;  
L17mm;  $\Phi$ 18mm  
PA

繩扣 Cord Locks

Y-460 Y-460A Y-517 Y-519 Y-496



Cord:  $<\Phi$ 4mm;  
L26xW18xT7mm  
PP

Cord:  $<\Phi$ 4mm;  
L26xW18xT7mm  
PP

Hole: 7x4mm;  
L24xW18xT6mm  
PP

Hole: 9x4mm;  
L27xW21xT6mm  
PP

Hole: 9x4mm;  
L25xW22.5xT7mm  
PP

繩扣 Cord Locks

Y-455 Y-456 Y-457 Y-491 Y-513



Cord:  $<\Phi$ 5mm;  
L26xW12mm  
PP

Cord:  $<\Phi$ 5mm;  
L26xW12mm  
PP

Cord:  $<\Phi$ 5mm;  
L28xW13mm  
PP

Cord:  $<\Phi$ 6mm;  
L34xW14mm  
PP

Cord:  $<\Phi$ 4mm;  
L27xW14mm  
PP

繩扣 Cord Locks

Y-494 Y-511 Y-458 Y-498 Y-495



Cord:  $<\Phi$ 6mm;  
L30xW30xT13mm  
PP

Cord:  $<\Phi$ 4mm;  
L26xW12mm  
PP

Cord:  $<\Phi$ 4mm;  
L30xW14mm  
PP

Cord:  $<\Phi$ 4mm;  
L28xW12mm  
PP

Cord:  $<\Phi$ 4mm;  
L32xW12mm  
PP

繩扣 Cord Locks

Y-499 Y-452 Y-493 Y-497 Y-514



Cord:  $<\Phi$ 5mm;  
L28xW14mm  
PP

Cord:  $<\Phi$ 5mm;  
L27xW12mm  
PP

Hole: 6x4mm;  
L24xW16xT6mm  
PP

Hole: 9x4mm;  
L30xW18xT8mm  
PP

Cord:  $<\Phi$ 4mm;  
L31xW11mm  
PP

繩扣 Cord Locks

Y-515 Y-516 Y-590 Y-592 Y-594



Cord:  $<\Phi$ 5mm;  
L28xW15xT10mm  
PP

Hole: 9x5mm;  
L30xW16xT10mm  
PP

Cord:  $<\Phi$ 4mm;  
Webbing: 1/4" (6mm);  
L27xW15xT10mm  
PP

Hole: 6x3mm;  
Webbing: 3/8" (9.5mm);  
L28xW16mm  
PP

Cord:  $<\Phi$ 3mm;  
Webbing: 3/8" (9.5mm);  
L25xW12xT8mm  
POM





Cord End & Zipper Pull

Cord End & Zipper Pull

吊鐘 **Cord Ends**

Y-481 Y-485 Y-484 Y-582 Y-483 Y-489



Cord: <math>\Phi 6\text{mm}</math>;  
L15xW14mm  
PP

Cord: <math>\Phi 5\text{mm}</math>;  
L15xW12mm  
PP

Cord: <math>\Phi 5\text{mm}</math>;  
L16xW13mm  
PP

Cord: <math>\Phi 4\text{mm}</math>;  
L10xW8mm  
PP

Cord: <math>\Phi 4\text{mm}</math>;  
L15xW11mm  
PP

Cord: <math>\Phi 5\text{mm}</math>;  
L15xW14mm  
PP

吊鐘 **Cord Ends**

Y-487 Y-486 Y-488 Y-581 Y-482 Y-584



Cord: <math>\Phi 5\text{mm}</math>;  
L11xW9mm  
PP

Cord: <math>\Phi 6\text{mm}</math>;  
L14xW10mm  
PP

Cord: <math>\Phi 5\text{mm}</math>;  
L11xW11mm  
PP

Cord: <math>\Phi 5\text{mm}</math>;  
L19xW12mm  
PP

Cord: <math>\Phi 5\text{mm}</math>;  
L18xW12mm  
PP

Cord: <math>\Phi 5\text{mm}</math>;  
L25xW12xT8mm  
PP

膠珠 **Cord Ends**

Y-476 Y-480 Y-477 Y-479 Y-478 Y-479A



$\Phi 8\text{mm}$   
PP

$\Phi 10\text{mm}$   
PP

$\Phi 13\text{mm}$   
PP

$\Phi 15\text{mm}$   
PP

$\Phi 21\text{mm}$   
PP

$\Phi 15\text{mm}$   
ABS

繩尾夾 **Cord Ends**

Y-431 Y-583 Y-585 Y-587 Y-589 Y-580 Y-580A



Hole: 5x2mm;  
L16xW10xT6mm  
POM

Hole: 6x3mm;  
L18xW17xT7mm  
PP or PA

Cord: <math>\Phi 4\text{mm}</math>;  
L19xW13xT8mm  
PP

Hole: 7x3mm;  
L21xW18xT9mm  
PP

Cord: <math>\Phi 3\text{mm}</math>;  
Webbing: 1/4" (6mm);  
L13xW12xT5mm  
POM

L19xW16xT8mm  
PP

L22xW16xT8mm  
PP or POM

繩尾扣 **Cord Ends**

Y-588 Y-586



Webbing: 10mm;  
L17xW9xT9mm  
PVC or PE

Webbing: 8mm;  
L20xW13xT8mm  
POM

繩尾夾 **Zipper Pulls**

Y-439 Y-436



L: 40mm;  $\Phi 8\text{mm}$ ;  
TPR

L: 38mm;  $\Phi 8\text{mm}$ ;  
TPR

繩尾夾 **Zipper Pulls**

Y-437 Y-432 Y-433 Y-434 Y-435 Y-438



L25xW8xT7mm  
TPR

L22xW17xT7mm  
TPR

L20xW14xT5mm  
TPR

L16xW10xT5mm  
TPR

L25xW8xT5mm  
TPR

L25xW16xT9mm  
TPR



Cord End & Zipper Pull

End strap

繩尾夾 **Zipper Pulls**

Y-433A Y-435A Y-436B Y-4002



L21xW14xT8mm  
TPR



L35xW11xT3.5mm  
TPR



L35xW10xT8mm  
TPR & PP



L15xW10xT6mm  
TPR

安全繩扣 **Safety Buckle**

Y-188



Cord: <math>\Phi</math>3mm;  
24 x 12mm  
PP

電話繩仔 **Mobile Strap Buckle**

Y-4100



Webbing: 10 mm;  
L16xW10xT6mm  
PP

挂件 **Hanging Accessories**

Y-4001



L39mm x W36mm x T8mm  
ABS

帶尾夾 **Strap Ends**

Y-673A Y-673C



1 1/2" (38mm)  
PVC/TPR



1 1/2" (38mm)  
PP

方扣 **Ring & Loop**

Y-258



7/8" (23mm)  
PP+PE

織帶夾 **Strap Ends**

Y-684 Y-685



2" (51mm)  
PP



2" (51mm)  
PP

耳仔 **Strap End**

Y-650



39x112mm  
PVC/TPR

帶尾夾 **Strap Ends**

Y-671 Y-673



1" (25mm)  
PP



1 1/2" (38mm)  
PE

帶尾夾(啤貼織帶) **Strap End**

Y-671B



1" (25mm)  
PP





Keep Loop & Belt Clip

Patch Tab

織帶夾 **Keep Loops** Y-671F Y-672F Y-673F Y-674F 掛勾 **Clip** Y-323



皮帶夾 **Keep Loops** Y-674 Y-675 Y-676 腰帶扣 **Belt Buckle** Y-705A



織帶夾 **Keep Loops** Y674A Y675A 手機掛扣 **Belt Clip** Y-677 膠夾 **Belt Clip** Y-679A



長方貼 **Strap Pads** Y-641 Y-643 四方貼 **Strap Pads** Y-640 Y-644



耳機膠片 **Headphone Pads** Y-646 Y-647 Y-648





Patch Tab

Luggage Guard

方角肩墊 Shoulder Pads

Y-630 Y-631 Y-632CL Y-632 Y-632B Y-633



1" (25mm) PVC/PE, 1 1/4" (32mm) PVC/PE, 1 1/2" (38mm) PVC/PE, 1 1/2" (38mm) PVC/PE, 1 1/2" (38mm) PVC/TPE/PE, 2" (51mm) PVC/PE

圓角肩墊 Shoulder Pads

Y-630A Y-631A Y-632A Y-633A



1" (25mm) PVC/PE, 1 1/4" (32mm) PVC/PE, 1 1/2" (38mm) PVC/PE, 2" (51mm) PVC/PE

方角肩墊 Shoulder Pads

Y-634 Y-635



1 1/2" (38mm) PVC, 1 1/2" (38mm) PVC/PE

背墊 Luggage Pads

Y-680 Y-681



56x145mm PVC/PE, 210x80mm PVC/PE

包邊條 Corner Guards

Y-860 Y-860A Y-860B Y-860C Y-860D



L150 x W15mm PVC/TPR, L160 x W15mm PVC, L150 x W15mm PVC, L150 x W15mm PVC, L150 x W15mm PVC

包邊條 Corner Guards

Y-860E Y-860F Y-861



L132x W15mm PVC, L160 x W15mm TPR, L100 x W15mm PVC

護角座 Base Protectors

Y-869 Y-866



Diagonal: 12.3mm; W25mm; PP; Corner Radius: 45mm, Diagonal: 160mm; W44mm; PP; Corner Radius: 45mm





Bag & Luggage Foot Pad

Bag & Luggage Foot Pad

鑽石腳板 Sew-on Diamond Foot Pad

Y-610 Y-611 Y-614 Y-612 Y-613



L50xW80xH7mm; 28粒 PVC/TPR/PE L50xW40xH6mm; 12粒 PVC/TPR/PE L53xW38xH7mm; 24粒 PVC/TPR/PE L40xW40xH7mm; 9粒 PVC/TPR/PE L40xW70xH9mm; 18粒 PVC/TPR/PE

鑽石腳板 Sew-on Diamond Foot Pad

Y-613A Y-611A Y-615 Y-616



L40xW70xH7mm; 18粒 PVC/TPR/PE L50xW40xH8mm; 12粒 PVC/TPR/PE L148xW38xH4mm; 125粒 PVC/TPR/PE L210xW40xH8.5mm; 60粒 PVC/TPR/PE

五坑腳板 Sew-on Bar Foot Pads

Y-623A Y-623



L58xW40xH7mm PVC/TPR/PE L58xW40xH8mm PVC/TPR/PE

七坑腳板 Sew-on Bar Foot Pads

Y-626



L50xW80xH7mm PVC/TPR/PE

長方形腳座 Sew-on Bar Foot Pads

Y-620 Y-621 Y-622



1 1/2" x 3 3/4" L38xW95xH6mm PVC/TPR/PE 2 1/2" x 5" L64xW127xH8.5mm PVC/TPR/PE 1 1/4" x 3" L32xW76xH7mm PVC/TPR/PE

一坑腳板 Sew-on Bar Foot Pads

Y-624



L40xW17xH7mm PVC/TPR/PE

長方形腳座 Sew-on Bar Foot Pads

Y-625



L43xW39xH10mm PVC/TPR/PE

蛋形腳座 Sew-on Bar Foot Pads

Y-849



L57xW27xH11mm PVC/TPR/PE

一坑腳板 Sew-on Bar Foot Pads

Y-619V



L160xW115xH7.5mm PVC/TPR

圓腳座 Sew-on Foot Pads

Y-621A Y-627 Y-627A Y-628 Y-628A Y-629A



4 5/8" (12cm) L115xW22xH7mm PVC/TPR 13.3 x 1.9-2.3cm L133xW23xH8mm PVC/TPR/PE 3" (7.5cm) L75xW20xH6mm PVC/TPR 1 1/4" (32mm) L178xW25xH9.5mm PVC/TPR/PE 4 1/2" (11.5cm) L112xW21xH6mm PVC/TPR 9" (23cm) L220xW15xH6mm PVC/TPR

圓腳座 Sew-on Foot Pads

Y-844 Y-844A Y-844B Y-844C Y-844D



H: 14mm; Φ40mm PVC/TPR/PE H: 19mm; Φ50mm PVC/TPR H: 14mm; Φ36mm PVC/TPR H: 14mm; Φ41mm PP H: 6mm; Φ37mm PVC/TPR



泡釘 Stubs

Y-810 Y-813 Y-814 Y-800 Y-801 Y-802



Φ23; H17mm  
PP

Φ19; H11mm  
PP

Φ19; H10mm  
PP

Φ18mm; H10mm  
PP

Φ21mm; H13mm  
PP

Φ19mm; H10mm  
PP

腳釘 Stubs

Y-803 Y-822



Φ23; H11mm  
PP

Φ18; H9mm  
PP

雙孔介子 Reinforcing Pads

Y-831 Y-832



Hole: Φ3.5mm;  
L2xW14xT2mm  
PVC

Hole: Φ3.5mm;  
L35xW17xT2mm  
PVC

鋸釘 Nails

Y-820 Y-821



L9mm  
STIBIUM

L12mm  
STIBIUM

單孔介子 Reinforcing Pads

Y-830, 830A, 830B



Y830: Φ15mm; Hole: Φ5mm; T1mm PE  
Y830A: Φ13mm; Hole: Φ6mm; T1.5mm PE  
Y830B: Φ19mm; Hole: Φ4mm; T1.5mm PE

腳座 Luggage Foot

Y-843 Y-840 Y-841 Y-842



L45xW32xH15mm  
PP

L48xW18xH16mm  
PP

L61xW29xH22mm  
PP

L86xW30xH22mm  
PP

膠腳座 Luggage Foot

Y-846



L89xW26xH53mm  
PA

突邊介子 Reinforcing Pads

Y-833A Y-833B Y-833C Y-833 Y-834



Φ15mm; Hole:  
Φ5mm; T2mm  
PP

Φ13mm; Hole:  
Φ5mm; T2mm  
PP

Φ16mm; Hole:  
Φ5mm; T1mm  
PE/PVC

Φ15mm; Hole:  
Φ3mm; T1.5mm  
PP

Φ31mm; Hole:  
Φ5mm; T2mm  
PP

電腦袋底座 Luggage Foot

Y-845 Y-845A



L30xW77xH15mm  
PE

5/8"x4 3/8"x1 1/4"  
L16xW111xH32mm  
PE

腳條 Luggage Foot Bars

Y-850



W29 x H15mm; L: 5"(13cm); 7"(18cm);  
8 1/2"(21cm); 11"(28cm); 12"(31cm);  
13"(33cm); 14"(36cm); 15"(38cm);  
16"(41cm); 18"(46cm); 19 1/2"(49cm);  
20 1/2"(52cm); 21 1/2"(55cm); 22  
1/2"(57cm); 25"(64cm)  
HIR PP





Bag & Luggage Foot Pad

Soft Handle

前腳架 Luggage Foot

Y-847L Y-847K Y-847H Y-847G Y-847F



L320 x W32 x H42mm HIR PP L280 x W32 x H27mm HIR PP L159 x W20 x H46mm HIR PP L190 x W23 x H54mm HIR PP L235 x W26 x H90mm HIR PP

前腳架 Luggage Foot

Y-847E Y-847D Y-847C Y-847B Y-847A



L225 x W25 x H63mm HIR PP L220 x W27 x H52mm HIR PP L220 x W26 x H43mm HIR PP L200 x W20 x H45mm HIR PP L200 x W20 x H41mm HIR PP

前腳架 Front Foot Racks

Y-851A Y-851B



L310 x W125 x H40mm HIR PP L210 x W125 x H40mm HIR PP

書包邊腳座 Bag Foot Stands

Y-864 Y-865 Y-863



L120xW24xH29mm PP H: 25mm PA L10.5" x W1" (L267 x W25mm) PE

啤貼織帶手挽 Overmolded Webbing Handles

Y-919 Y-919H Y-919B Y-919D



L90 x W16mm; For 3/8 or 3/4" webbing; PVC/TPR L86 x W18mm; For 3/8" or 3/4" Webbing; PVC/TPR L130 x W28mm; For 7/8" Webbing PVC/TPR L125 x W35mm; For 1" Webbing; PVC/TPR +A (Optional)

啤貼織帶手挽 Overmolded Webbing Handles

Y-919A Y-919C Y-919E Y-919F



L110 x W14mm; For 3/8" or 3/4" Webbing; PVC/TPR L105 x W30mm; For 1" Webbing; PVC/TPR +A (Optional) L96xW25.5mm; For 3/4" Webbing PVC/TPR L130 x W36mm; For 7/8 Webbing PVC/TPR

公文袋手挽 Baggage Handle

Y-913



L130 x H110mm PVC



Soft Handle

Luggage & Label Tag

圓通手挽 **Webbing Handles**

Y-915 Y-915A Y-915B Y-915E Y-915H



L: 5" (127mm)  
PVC/TPR

L: 5" (127mm)  
PVC/TPR

L: 5" (127mm)  
PVC/TPR

L: 4 1/2" (115mm)  
PVC/TPR

L: 5" (127mm)  
PVC/TPR

串織帶手挽 **Webbing Handles**

Y-9190 Y-9191 Y-9192 Y-9193 Y-9195 Y-9194



L90 x W16mm  
For 3/8" Webbing  
PVC/TPR

L113 x W22mm  
For 1/2" Webbing  
PVC/TPR

L140 x W31mm  
For 1" Webbing  
PVC/TPR

L128 x W32mm  
For 7/8" Webbing  
PVC/TPR

L110 x W15mm  
For 1" Webbing  
PVC/TPR

L125 x W32mm  
For 3/8" or 3/4" Webbing  
PVC/TPR

手挽連織帶啤 **Overmolded Webbing Handles**

Y-915C Y-915F Y-915D Y-919G



L: 5" (127mm)  
PVC/TPR  
+A (Optional)

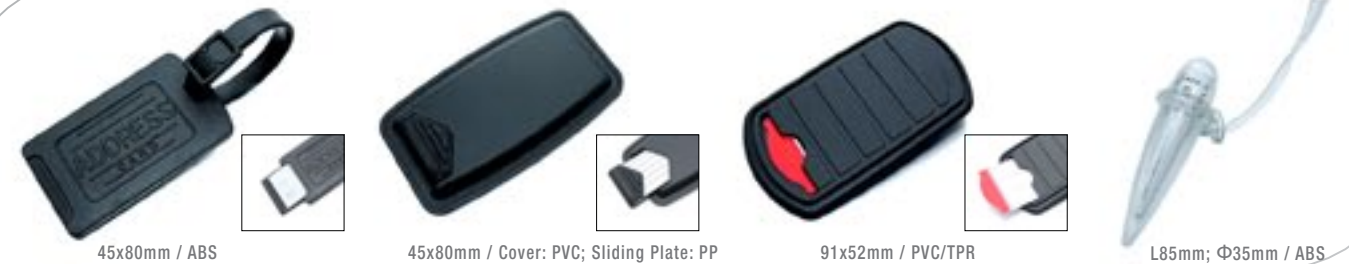
5" (127mm)  
PVC/TPR  
+A (Optional)

L: 5" (127mm)  
PVC/TPR  
+A (Optional)

L140 x W34mm; For 1"  
Webbing; PVC/TPR  
+A (Optional)

行李牌 **Luggage Tags**

Y-690 Y-691 Y-691B Y-692



45x80mm / ABS

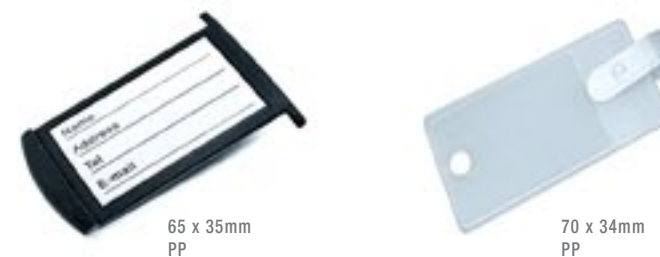
45x80mm / Cover: PVC; Sliding Plate: PP

91x52mm / PVC/TPR

L85mm; Φ35mm / ABS

掛牌 **Label Tags**

Y-691A Y-693



65 x 35mm  
PP

70 x 34mm  
PP

掛牌 **Tag straps**

Y-690A Y-690B



L170 x W10mm  
PVC

L1: 150mm; L2: 170mm; 3mm  
PVC





圓通D形手挽 **D Handles**

Y-920

Y-920A

Y-920B



L: 5" (127mm)  
Handle: PP  
Base: PA



L: 5" (127mm)  
Handle: PP  
Base: PA



L: 4" (102mm)  
PP

長手挽 **Long Handle**

Y-970



L: 13" (33cm)  
Handle: PVC  
Base: ABS



側手把 **Side Handles**

Y-911

Y-912



Handle Length: 16.5cm; Total Length: 31.5cm  
Handle: PVC/TPR; Base: PA



Handle Length: 16.5cm; Total Length: 31.5cm  
Handle: PVC/TPR; Base: PA

電腦袋手挽 **Handle**

Y-914



Total Length: 26.7cm  
PE

C形手挽 **C Handles**

Y-960

Y-960A

Y-960B

Y-960C



L: 5 1/2" (15cm)  
PP



L: 5 1/2" (15cm)  
PP



L: 5 1/2" (15cm); Total L: 12" (31cm)  
PP



L: 5 1/2" (15cm)  
PP

手挽 **Handles**

Y-916

Y-916A

Y-917

Y-918



Handle Length: 17.8cm;  
Total Length: 28cm  
Handle: PVC/TPR; Base: Iron



Handle Length: 16.5cm;  
Total Length: 28.6cm  
Handle: PVC/TPR; Base: Metal Alloy



Handle Length: 17.8cm;  
Total Length: 26.7cm  
Handle: PVC/TPR; Base: Metal Alloy



Handle Length: 17cm;  
Total Length: 24.5cm  
Handle: PVC/TPR;  
Base: PP/Metal Alloy

中間PVC手挽 **PVC Grip Handles**

Y-980

Y-980A

手挽 **Handle**

Y-961

手挽 **Handle**

Y-923



L: 5" (127mm)  
Handle: PP; Grip: PVC



L: 5" (127mm); Total L: 10" (25cm)  
Handle: PP; Grip: PVC; Base: PP



L: 20.5cm  
PP



L: 5 1/4" (133mm)  
PP

小手挽 **Light Duty Handles**

Y-921

Y-921A

Y-922



L: 3 3/4" (95mm)  
Handle: PP;  
Base: Stainless Steel



L: 3 3/4" (95mm)  
Handle: PP;  
Base: PP



L: 3" (76mm)  
Handle: PP;  
Base: Stainless Steel

航空手挽 **Side Handle**

Y-910



H112 x W106 x T20mm  
PP



Hard Handle

Luggage Wheel

手挽 <b>Handles</b>		C形手挽 <b>C Handle</b>	U形手挽 <b>U Handle</b>	護邊測角輪(配軸承) <b>Luggage Wheel</b>	護邊溜冰側角輪(配2粒螺絲) <b>Luggage Wheel</b>	護邊側角輪 <b>Luggage Wheel</b>	
Y-940	Y-941	Y-935	Y-933	Y-508B	Y-508A	Y-851	
 L: 8 1/2" (21cm) PVC	 L: 7 1/2" (19cm) PE	 L10.5xH9.5cm PMMA/PP	 L: 4" (103mm) PMMA/PP	 Φ68mm; Cover: (HIR) PP; Core: PA; Mold-on Tread: PU/PVC; Interchangeable with YW68B	 Φ68mm; Cover: (HIR) PP; Core: PA; Mold-on Tread: PU/PVC; Interchangeable with YW68B; CR: 45mm	 Φ100mm Cover: (HIR) PP; Core: PA; Mold-on Tread: PU/PVC; CR: 45mm	
D形手挽 <b>D Handles</b>		半圓手挽 <b>Semicircle Handle</b>	溜冰側角輪 <b>Luggage Wheel</b>				萬向輪 <b>360° Rotatable Luggage Wheels</b>
Y-932	Y-936	Y-930	Y-507A	Y-600RW	Y-601RW		
 L: 4" (103mm) PP	 L: 5" (127mm) PP	 L: 4" (102mm) PP	 Φ58mm Cover: (HIR) PP; Core: PA; Mold-on Tread: PU/PVC; Screw Holder: PP CR: 45mm	 Φ48mm Cover: (HIR) PP; Base & Core: PA; Mold-on Tread: PU/PVC	 Φ48mm Base & Core: PA; Mould-on Tread: PU/PVC		
圓圈手挽 <b>Circle Handle</b>		正方形手挽 <b>Square Handle</b>	直角輪(配軸承) <b>Luggage Wheels</b>		購物袋輪 <b>Shopping Trolley Wheels</b>		
Y-934		Y-937	Y-504	Y-504A	Y-550	Y-551	
 Outer: 4 1/4"(108mm), Inner: 5" (127mm) PMMA/PP		 L120 x 120mm PP	 Φ40mm Cover: (HIR) PP; Core: PA; Mold-on Tread: PU/PVC	 Φ40mm Cover: (HIR) PP; Core: PA; Mold-on Tread: PU/PVC	 Φ85mm; Thickness: 17mm Wheel: PP; Base: PA; Tube Cover: PVC	 Φ91mm; Thickness: 17mm Tread: PVC; Core: PP; Base: PA; Tube Cover: PVC	





溜冰側角輪 (配軸承) **Luggage Wheels**

Y-506 Y-507 Y-508



Φ50mm  
Cover: (HIR) PP;  
Core: PA;  
Mold-on Tread: PU/PVC  
CR: 53mm

Φ58mm  
Cover: (HIR) PP;  
Core: PA;  
Mold-on Tread: PU/PVC  
CR: 53mm

Φ68mm  
Cover: (HIR) PP; Core: PA;  
Mold-on Tread: PU/PVC  
Interchangeable with YW68B  
CR: 53mm

袋底護邊輪座 **Luggage Wheels**

Y-852A Y-852B Y-852C



12" (31cm); Cover: PA;  
Core: PA; Mold-on  
Tread: PU/PVC; Inter-  
changeable with YW68B  
CR: 50mm

14" (36cm); Cover: PA;  
Core: PA; Mold-on  
Tread: PU/PVC; Inter-  
changeable with YW68B  
CR: 50mm

16" (41cm); Cover: PA;  
Core: PA; Mold-on  
Tread: PU/PVC Inter-  
changeable with YW68B  
CR: 50mm

護邊側角輪 **Luggage Wheels**

Y-853 Y-853A



Φ100mm; Cover: (HIR)  
PP; Core: PA; Mold-on  
Tread: PU/PVC  
CR: 35mm

L178 x W90 x H72mm  
(HIR) PP  
For Y853 only  
CR: 35mm

側角輪 **Luggage Wheels**

Y-508F Y-501 Y-502 Y-503



Φ50mm  
Cover: (HIR) PP; Core:  
PA; Mold-on Tread:  
PU/PVC  
CR: 43mm

Φ50mm  
Cover: (HIR) PP; Core:  
PA; Mold-on Tread:  
PU/PVC  
CR: 51mm

Φ58mm  
Cover: (HIR) PP; Core:  
PA; Mold-on Tread:  
PU/PVC  
CR: 53mm

Φ68mm  
Cover: (HIR) PP; Core:  
PA; Mold-on Tread:  
PU/PVC  
CR: 53mm

護邊側角輪 **Luggage Wheels**

Y-503B Y-503C Y-503E



Φ68mm  
Cover: (HIR) PP; Core:  
PA; Mold-on Tread:  
PU/PVC  
CR: 50mm

Φ68mm  
Cover: (HIR) PP; Core:  
PA; Mold-on Tread:  
PU/PVC  
CR: 50mm

Φ68mm  
Cover: (HIR) PP; Core:  
PA; Mold-on Tread:  
PU/PVC  
CR: 45mm

側角輪內蓋 **Luggage Wheel Back Supports**

Y-501A Y-503A Y-503D



L: 5 1/2"(14cm); 6"(15cm); 6 1/2"(16cm);  
7"(18cm); 7 1/2"(19cm); 8"(20cm);  
8 1/2"(21cm); 9"(23cm) (HIR) PP  
For Y501, Y502, Y506 & Y507; CR: 65mm

L145 x W81x H50mm  
(HIR) PP  
For Y508, Y503  
CR: 53mm

L139 x W64 x H50mm  
(HIR) PP  
For Y503E, Y509D  
CR: 45mm

護邊溜冰輪 (配軸承) **Luggage Wheels**

Y-509B Y-509C Y-509D Y-509E



Φ68mm; Cover: (HIR) PP;  
Core: PA; Mold-on Tread: PU/PVC  
Interchangeable with YW68B  
CR: 50mm

Φ68mm; Cover: (HIR) PP; Core:  
PA; Mold-on Tread: PU/PVC  
Interchangeable with YW68B  
CR: 50mm

Φ68mm; Cover: (HIR) PP;  
Core: PA; Mold-on Tread: PU/PVC  
Interchangeable with YW68B  
CR: 45mm

Φ58mm  
Cover: (HIR) PP; Core: PA;  
Mold-on Tread: PU/PVC  
CR: 53mm

輪 **Wheel**

YW-50 YW-58 YW-68 YW-68A YW-68B YW-100



Φ50mm  
Core: PA; Mold-on  
Tread: PU/PVC

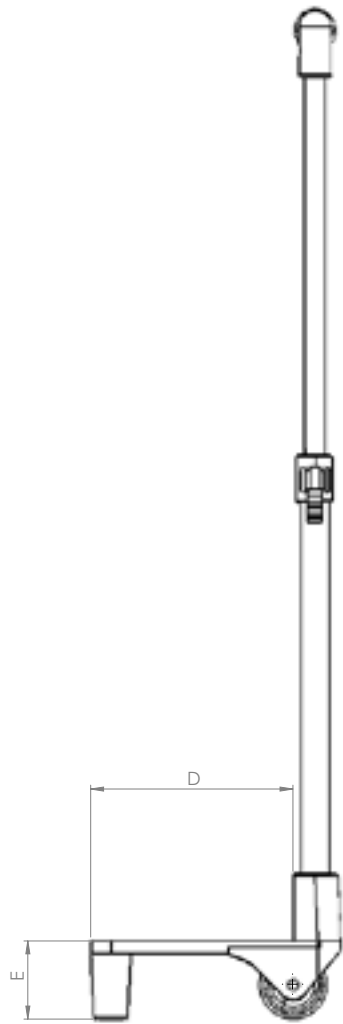
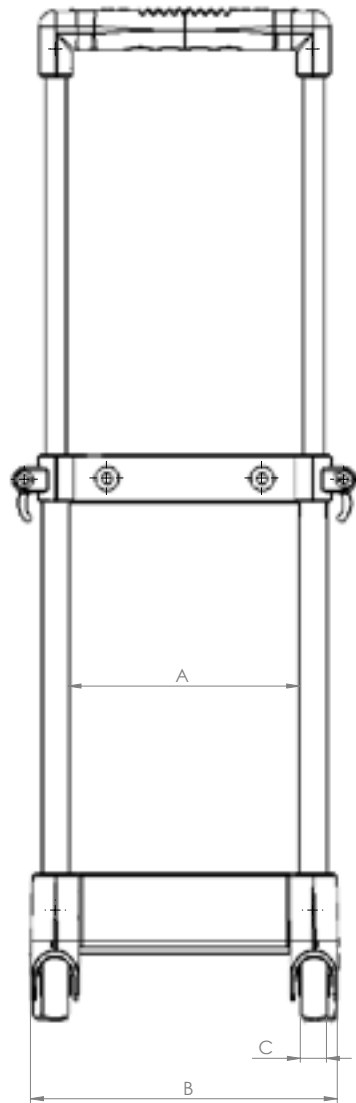
Φ58mm  
Core: PA; Mold-on  
Tread: PU/PVC

Φ68mm  
Core: PA; Mold-on  
Tread: PU/PVC

Φ68mm  
Core: PA; Mold-on  
Tread: PU/PVC

Φ68mm  
Core: PA; Mold-on  
Tread: PU/PVC

Φ100mm  
Core: PA; Mold-on  
Tread: PU/PVC



A: Gap between tubes 管之間的距離  
 B: Width of trolley 車架/拉桿闊度  
 C: Width of Wheel 輪厚度  
 D: Depth for holding base 支撐板深度  
 E: Height of front stand 前腳高度  
 F: Tube Cross Section 管的橫截面

車架圓鐵管 **Round Iron Tube**

Y-900



二節 (大輪)  
Double Layer

A: 180mm; B: 238mm;  
C:  $\Phi$ 40; W37mm;  
D: 40mm; E: 44mm;  
F:  $\Phi$ 16mm;  $\Phi$ 12mm

車架圓鐵管 **Round Iron Tube**

Y-900A



二節 (大輪)  
Double Layer

A: 180mm; B: 238mm;  
C:  $\Phi$ 40; W37mm;  
D: 40mm; E: 44mm;  
F:  $\Phi$ 16mm;  $\Phi$ 12mm

車架圓鐵管 **Round Iron Tube**

Y-900A3



三節 (大輪)  
Triple Layer

A: 180mm; B: 238mm;  
C:  $\Phi$ 40; W37mm;  
D: 40mm; E: 44mm;  
F:  $\Phi$ 19mm;  $\Phi$ 16mm;  $\Phi$ 12mm

車架圓鐵管 **Round Iron Tube**

Y-900B



二節 (大輪)  
Double Layer

A: 162mm; B: 195mm;  
C:  $\Phi$ 40; W37mm;  
D: 65mm; E: 45mm;  
F:  $\Phi$ 16mm;  $\Phi$ 12mm







車架圓鐵管 **Round Iron Tube**

Y-900BE



二節 (大輪)  
Double Layer

A: 162mm; B: 195mm;  
C:  $\Phi$ 40; W37mm;  
D: 65mm; E: 45mm;  
F:  $\Phi$ 16mm;  $\Phi$ 12mm



車架圓鐵管 **Round Iron Tube**

Y-901



二節 (大輪)  
Double Layer

A: 180mm;  
B: 240mm;  
C:  $\Phi$ 40; W37mm;  
E: 55mm;  
F:  $\Phi$ 19mm;  $\Phi$ 16mm

Y-849B

Y-849A



H540mm;Depth of  
Suitcase:4"(10.2mm)  
or 5"(12.7mm)  
HIR PP

H540mm;Depth of  
Suitcase:6"(15.3mm)  
or 7"(17.8mm)  
HIR PP



車架圓鐵管 **Round Iron Tube**

Y-901C



二節 (大輪)  
Double Layer

A: 180mm;  
B: 240mm;  
C:  $\Phi$ 40; W37mm;  
E: 55mm;  
F:  $\Phi$ 16mm;  $\Phi$ 12mm

Y-849B

Y-849A



H540mm;Depth of  
Suitcase:4"(10.2mm)  
or 5"(12.7mm)  
HIR PP

H540mm;Depth of  
Suitcase:6"(15.3mm)  
or 7"(17.8mm)  
HIR PP



車架圓鐵管 **Round Iron Tube**

Y-902



二節 (大輪)  
Double Layer

A: 162mm; B: 195mm;  
C:  $\Phi$ 34; W15.5mm;  
D: 40mm; E: 40mm;  
F:  $\Phi$ 16mm;  $\Phi$ 9.7mm



車架圓鐵管 **Round Iron Tube**

Y-901A



三節 (大輪)  
Triple Layer

A: 180mm;  
B: 240mm;  
C:  $\Phi$ 40; W37mm;  
E: 55mm;  
F:  $\Phi$ 19mm;  $\Phi$ 16mm;  $\Phi$ 12mm

Y-849B

Y-849A



H540mm;Depth of  
Suitcase:4"(10.2mm)  
or 5"(12.7mm)  
HIR PP

H540mm;Depth of  
Suitcase:6"(15.3mm)  
or 7"(17.8mm)  
HIR PP



車架圓鐵管 **Round Iron Tube**

Y-901B



二節 (大輪)  
Double Layer

A: 180mm;  
B: 240mm;  
C:  $\Phi$ 40; W37mm;  
E: 55mm;  
F:  $\Phi$ 16mm;  $\Phi$ 12mm

Y-849B

Y-849A



H540mm;Depth of  
Suitcase:4"(10.2mm)  
or 5"(12.7mm)  
HIR PP

H540mm;Depth of  
Suitcase:6"(15.3mm)  
or 7"(17.8mm)  
HIR PP



車架圓鐵管 **Round Iron Tube**

Y-902A



二節 (大輪)  
Double Layer

A: 162mm; B: 226mm;  
C:  $\Phi$ 40; W37mm;  
D: 40mm; E: 46mm;  
F:  $\Phi$ 16mm;  $\Phi$ 9.7mm



車架圓鐵管 **Round Iron Tube**

Y-902B



二節 (大輪)  
Double Layer

A: 162mm; B: 203mm;  
C:  $\Phi$ 33; W28mm;  
D: 35mm; E: 37mm;  
F:  $\Phi$ 16mm;  $\Phi$ 9.7mm





車架圓鐵管 **Round Iron Tube**

Y-902BK



二節 (溜冰輪)  
Double Layer

A: 162mm; B: 201mm;  
C:  $\Phi$ 50; W19mm;  
D: 52mm; E: 54mm;  
F:  $\Phi$ 16mm;  $\Phi$ 12mm

車架圓鐵管 **Round Iron Tube**

Y-902C



二節 (中軸)  
Double Layer

A: 162mm; B: 203mm;  
C:  $\Phi$ 33; W28mm;  
D: 35mm; E: 37mm;  
F:  $\Phi$ 16mm;  $\Phi$ 9.7mm

車架圓鐵管 **Round Iron Tube**

Y-902ED



二節 (細軸)  
Double Layer

A: 162mm; B: 195mm;  
C:  $\Phi$ 34; W15.5mm;  
D: 40mm; E: 40mm;  
F:  $\Phi$ 16mm;  $\Phi$ 9.7mm

車架圓鐵管 **Round Iron Tube**

Y-902DE



底座可摺  
Foldable Base

二節 (中軸)  
Double Layer

A: 162mm; B: 195mm;  
C:  $\Phi$ 33; W28mm;  
D: 35mm; E: 37mm;  
F:  $\Phi$ 16mm;  $\Phi$ 9.7mm

車架圓鐵管 **Round Iron Tube**

Y-902CE



二節 (中軸)  
Double Layer

A: 162mm; B: 203mm;  
C:  $\Phi$ 33; W28mm;  
D: 35mm; E: 37mm;  
F:  $\Phi$ 16mm;  $\Phi$ 9.7mm

車架圓鐵管 **Round Iron Tube**

Y-902E



二節 (細軸)  
Double Layer

A: 162mm; B: 195mm;  
C:  $\Phi$ 34; W15.5mm;  
D: 40mm; E: 40mm;  
F:  $\Phi$ 16mm;  $\Phi$ 9.7mm

車架圓鐵管 **Round Iron Tube**

Y-902DF



二節 (中軸)  
Double Layer

A: 162mm; B: 195mm;  
C:  $\Phi$ 33; W28mm;  
D: 35mm; E: 37mm;  
F:  $\Phi$ 16mm;  $\Phi$ 9.7mm

車架圓鐵管 **Round Iron Tube**

Y-902G



二節 (中軸) — 配軸承  
Double Layer — With Bearings

A: 145mm; B: 226mm;  
C:  $\Phi$ 40; W39mm;  
D: 36mm; E: 45mm;  
F:  $\Phi$ 16mm;  $\Phi$ 12mm

Extendable Handle/Trolley

Extendable Handle/Trolley





車架圓鐵管 **Round Iron Tube**

Y-902H



二節  
Double Layer

A: 134mm; B: 172mm;  
C:  $\Phi$ 26; W39mm;  
D: 40mm; E: 44mm;  
F:  $\Phi$ 16mm;  $\Phi$ 12mm

車架圓鐵管 **Round Iron Tube**

Y-902J



二節  
Double Layer

A: 162mm; B: 227mm;  
C:  $\Phi$ 40; W37mm;  
D: 37mm; E: 45mm;  
F:  $\Phi$ 16mm;  $\Phi$ 12mm

車架圓鐵管 **Round Iron Tube**

Y-904



二節  
Double Layer

A: 180mm; B: 260mm;  
F:  $\Phi$ 16mm;  $\Phi$ 12mm

車架圓鐵管 **Round Iron Tube**

Y-904A

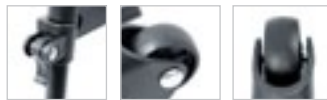


二節  
Double Layer

A: 180mm; B: 260mm;  
F:  $\Phi$ 16mm;  $\Phi$ 12mm

B B 車架 **Baby Trolley**

Y-902R



二節  
Double Layer

A: 118mm; B: 156mm;  
C:  $\Phi$ 33; W13.3mm;  
D: 103mm; E: 40mm;  
F:  $\Phi$ 13mm;  $\Phi$ 9.5mm

車架圓鐵管 **Round Iron Tube**

Y-903



二節  
Double Layer

A: 115mm; B: 158mm;  
F:  $\Phi$ 19mm;  $\Phi$ 12mm

車架圓鐵管 **Round Iron Tube**

Y-904B



二節  
Double Layer

A: 180mm; B: 240mm;  
C:  $\Phi$ 40; W37mm;  
D: 40mm; E: 44mm;  
F:  $\Phi$ 16mm;  $\Phi$ 12mm

車架圓鐵管 **Round Iron Tube**

Y-904C



二節  
Double Layer

A: 180mm; B: 219mm;  
F:  $\Phi$ 16mm;  $\Phi$ 12mm



車架圓鐵管 **Round Iron Tube**

Y-904D



二節  
Double Layer

A: 180mm; B: 240mm;  
C:  $\Phi$ 40; W37mm;  
D: 40mm; E: 44mm;  
F:  $\Phi$ 16mm;  $\Phi$ 12mm

車架圓鐵管 **Round Iron Tube**

Y-904F



三節  
Triple Layer

A: 175mm; B: 222mm;  
F:  $\Phi$ 19mm;  $\Phi$ 16mm;  $\Phi$ 12mm

正方(鐵/鋁)管 **Square Iron/Al Tube**

Y-906A



三節  
Triple Layer

A: 104mm;  
B: 148mm; 204mm  
F: 20x20mm; 16x16mm; 12x12mm

正方(鐵/鋁)管 **Square Iron/Al Tube**

Y-906A4



四節  
Quadruple Layer

A: 100mm; B: 155mm; 203mm;  
F: 23.5x23.5mm; 20x20mm;  
16x16mm; 12x12mm

車架圓鐵管 **Round Iron Tube**

Y-905



三節  
Triple Layer

A: 115mm; B: 157mm;  
F:  $\Phi$ 19mm;  $\Phi$ 16mm;  $\Phi$ 12mm

正方(鐵/鋁)管 **Square Iron/Al Tube**

Y-906



三節  
Triple Layer

A: 102mm; B:  
155mm; 204mm;  
F: 20x20mm;  
16x16mm; 12x12mm

正方(鐵/鋁)管 **Square Iron/Al Tube**

Y-907



三節  
Triple Layer

A: 102mm; B: 154mm;  
F: 20x20mm;  
16x16mm; 12x12mm

正方(鐵/鋁)管 **Square Iron/Al Tube**

Y-907A



二節  
Double Layer

A: 103mm; B: 151mm;  
F: 20x20mm; 16x16mm





正方(鐵/鋁)管 **Square Iron/Al Tube**

Y-908



二節  
Double Layer  
A: 100mm; B: 142mm;  
F: 16x16mm; 12x12mm

正方(鐵/鋁)管 **Square Iron/Al Tube**

Y-908A



二節(細軸)  
Double Layer  
A: 100mm; B: 142mm;  
F: 16x16mm; 12x12mm

正方(鐵/鋁)管 **Square Iron/Al Tube**

Y-908D



二節  
Double Layer  
A: 100mm; B: 142mm;  
F: 16x16mm; 12x12mm

正方(鐵/鋁)管 **Square Iron/Al Tube**

Y-909



二節  
Double Layer  
A: 132mm; B: 184mm;  
F: 16x16mm; 12x12mm

正方(鐵/鋁)管 **Square Iron/Al Tube**

Y-908B



二節  
Double Layer  
A: 100mm; B: 142mm;  
F: 16x16mm; 12x12mm

正方(鐵/鋁)管 **Square Iron/Al Tube**

Y-908C



二節  
Double Layer  
A: 100mm; B: 142mm;  
F: 16x16mm; 12x12mm

正方(鐵/鋁)管 **Square Iron/Al Tube**

Y-909A



二節  
Double Layer  
A: 112mm; B: 184mm;  
F: 16x16mm; 12x12mm

正方(鐵/鋁)管 **Square Iron/Al Tube**

Y-909B



二節  
Double Layer  
A: 107mm; B: 148mm;  
F: 16x16mm; 12x12mm

Extendable Handle/Trolley

Extendable Handle/Trolley



正方(鐵/鋁)管 **Square Iron/Al Tube**

Y-909C



三節  
Triple Layer  
A: 104mm;  
B: 148mm;210mm  
F: 20x20mm;  
16x16mm;12x12mm

正方(鐵/鋁)管 **Square Iron/Al Tube**

Y-909D



二節  
Double Layer  
A: 107mm;  
B: 143mm;210mm  
F: 16x16mm;12x12mm

長方鋁管 **Rectangular Al Tube**

Y-906C2

Y-906C3



二節  
Double Layer  
A: 141mm;  
B: 185mm;  
F: 21.6x16.8mm;  
18x13mm

三節  
Triple Layer  
A: 136mm;  
B: 185mm;  
F: 25.8x20.8mm;  
21.6x16.8mm;  
18x13mm



長方鋁管 **Rectangular Al Tube**

Y-906D2

Y-906D3



二節(仔輪)  
Double Layer  
A: 141mm;  
B: 330mm;  
C: Φ58mm;  
W21mm;  
D: 48mm;  
E: 57mm;  
F: 21.6x16.8mm;  
18x13mm

三節(仔輪)  
Triple Layer  
A: 136mm;  
B: 330mm;  
C: Φ58mm; W21mm;  
D: 48mm;  
E: 57mm;  
F: 25.8x20.8mm;  
21.6x16.8mm;  
18x13mm

Y-848B  
L265 x W42 x  
H57mm  
HIR PP

Y-848A  
L265 x W42 x  
H65mm  
HIR PP

正方(鐵/鋁)管 **Square Iron/Al Tube**

Y-902M



二節  
Double Layer  
A: 143mm; B: 204mm;  
C: Φ58; W21mm;  
E: 64mm;  
F: 16x16mm; 12x12mm

長方鋁管 **Rectangular Al Tube**

Y-906B2

Y-906B3



二節  
Double Layer  
A: 141mm;  
B: 185mm;  
F: 21.6x16.8mm;  
18x13mm

三節  
Triple Layer  
A: 136mm;  
B: 185mm;  
F: 25.8x20.8mm;  
21.6x16.8mm;  
18x13mm



長方鋁管 **Rectangular Al Tube**

Y-906E2

Y-906E3



二節  
Double Layer  
A: 141mm;  
B: 185mm;  
F: 21.6x16.8mm;  
18x13mm

三節  
Triple Layer  
A: 136mm;  
B: 185mm;  
F: 25.8x20.8mm;  
21.6x16.8mm;  
18x13mm



長方鋁管 **Rectangular Al Tube**

Y-906H2

Y-906H3



二節  
Double Layer  
A: 141mm;  
B: 185mm;  
E: 70mm;  
F: 21.6x16.8mm;  
18x13mm

三節  
Triple Layer  
A: 136mm;  
B: 185mm;  
E: 70mm;  
F: 25.8x20.8mm;  
21.6x16.8mm;  
18x13mm







長方鋁管 **Rectangular Al Tube**

Y-906F2 Y-906F3



二節  
Double Layer

A: 141mm;  
B: 185mm;  
E: 70mm;  
F: 21.6x16.8mm;  
18x13mm

三節  
Triple Layer

A: 136mm;  
B: 185mm;  
E: 70mm;  
F: 25.8x20.8mm;  
21.6x16.8mm;  
18x13mm



長方鋁管 **Rectangular Al Tube**

Y-906G2 Y-906G3



二節 (孖輪)  
Double Layer

A: 141mm;  
B: 330mm;  
C: Φ58mm;  
W21mm;  
D: 48mm;  
E: 57mm;  
F: 21.6x16.8mm;  
18x13mm

三節 (孖輪)  
Triple Layer

A: 136mm;  
B: 330mm;  
C: Φ58mm; W21mm;  
D: 48mm;  
E: 57mm;  
F: 25.8x20.8mm;  
21.6x16.8mm;  
18x13mm

Y-848B

Y-848A



L265 x W42 x  
H57mm  
HIR PP

L265 x W42 x  
H65mm  
HIR PP

折疊手拉車 **Foldable Trolley-Al Tube**

Y-9002



重型輪  
Heavy-Duty Wheels

二節  
Triple Layer

A: 136mm; B: 300mm;  
C: Φ100; W32mm;  
D: 290mm; E: 45mm;  
F: 25.8x20.8mm; 21.6x16.8mm

單方管 **Single Square Tube**

Y-9061



三節  
Triple Layer

B: 94mm;  
F: 20x20mm;  
16x16mm;12x12mm

折疊手拉車 **Foldable Trolley-Al Tube**

Y-9003



重型輪  
Heavy-Duty Wheels

三節  
Triple Layer

A: 136mm; B: 300mm;  
C: Φ100; W32mm;  
D: 290mm; E: 45mm;  
F: 25.8x20.8mm; 21.6x16.8mm;  
18x13mm

Extendable Handle/Trolley

Extendable Handle/Trolley



Others

Others

B B 鎖匙扣 Baby Rattle Y698	B B 鎖匙扣 Baby Rattle Y699
	
L111 x W67.5 x T4.2mm; Key size: L61 x W37 X T3mm; PP	Outer: Φ 65, T5.5mm; Key size: L61 x W37 x T3mm; PP

飯盒配刀叉 Lunch Box With Fork and spoon Y3000	飯盒 Lunch Box Y3001
	
15 x 15 x 4.5cm PP	17.2 x 11.1 x 5.5cm PP

管塞 Stick Cap Y5001	管塞 Stick Cap Y5000	爬山背包支撐件 Backpack Support Part Y689	小型衣架 Mini Hanger Y3496
			
9x7mm; Hole:Φ 5.5mm	15x4mm; Hole:Φ 2.75 - 3mm	L111.5 x W58 x T8mm; POM	L150mm x H92mm x T2mm PE or PP
可摺式衣架 Foldable Clothes Hanger Y3490			
			
L41 x H12cm; PP			









Flag Accessories

Flag Accessories

單孔旗桿座 Single Hole Flag Base	雙孔旗桿座 Double Holes Flag Base	三孔旗桿座 Triple Holes Flag Base	
FLAG012-1	FLAG012-2	FLAG012-3	FLAG004+001+012
			
L97.5mm x W69.5mm x H36mm ABS	L97.5mm x W69.5mm x H36mm ABS	L97.5mm x W69.5mm x H36mm ABS	
單孔圓形旗桿座 Single Hole Flag Base		三孔方形旗桿座 Triple Holes Flag Base	
FLAG002	FLAG002+004+001	FLAG003	FLAG003+004+001
			
Φ 62mm; D20mm ABS		40x40mm; H17mm ABS	
旗桿座 Flag Base	旗桿座 Flag Base	圓珠旗桿頭 Flag Stick Head	圓珠旗桿頭 Flag Stick Head
FLAG005A	FLAG005B	FLAG009	FLAG010
			
L78mm x W44mm x H66mm; HoleΦ 20mm ABS	L96.5mm x W36.5mm x H68mm; HoleΦ 19.8mm ABS	Φ 32mm; HoleΦ 20mm ABS	Φ 45mm; HoleΦ 19mm ABS

錐形旗桿頭 Flag Stick Head	錐形旗桿頭 Flag Stick Head	洋蔥形旗桿頭 Flag Stick Head	米奇旗桿頭 Flag Stick Head
FLAG016	FLAG004	FLAG011	FLAG017
			
L34mm; Φ 14.5mm; Outer Φ 11mm; HoleΦ 8mm ABS	L20mm; Φ 9mm ABS	Φ 52mm; Φ Hole 20mm; H74mm ABS	L25mm x W22mm; Φ 13.8mm PP
旗桿勾 Flag Hook	旗桿勾 Flag Hook	旗桿勾 Flag Hook	旗桿吊勾 Flag Hook
FLAG007	FLAG008	FLAG006	FLAG018
			
Strap Width: 1"(25.4mm); 35.7mm x 32mm x T7.5mm ABS	HoleΦ 10mm; L42.5mm x W28mm x T10.5mm ABS	OuterΦ 28.7mm; HoleΦ 20.4mm; H29.5mm; Ring H:16.3mm ABS	L172mm x H33mm; Φ 10mm; Hole Φ 11.6mm PP
旗桿 Flag Stick	旗桿 Flag Stick	旗桿 Flag Stick	旗桿 Flag Stick
FLAG001	FLAG015	FLAG013	FLAG014
			
L28mm; Φ 5mm; ABS	L333mm (13 1/8") x W28mm; Pole: 9.8mm x 8.6mm; PP	L465mm (18 1/4") x W65mm; Pole:Φ 12.5mm	L408mm (16") x W30mm; Pole: 10mm x 10mm



Sports/Squeeze Bottle

Sports/Squeeze Bottle

翻蓋水樽 Flip Cap Bottle YA04  300ml; H: 150mm; Φ 64mm	翻蓋水樽 Flip Cap Bottle YA03  400ml; H: 150mm; Φ 72mm	翻蓋水樽 Flip Cap Bottle YA05  400ml; H: 160mm; Φ 71mm	翻蓋水樽 Flip Cap Bottle YA02  600ml; H: 200mm; Φ 72mm
翻蓋水樽 Flip Cap Bottle YA06  550ml; H: 185mm; Φ 72mm	翻蓋水樽 Flip Cap Bottle YA07  700ml; H: 240mm; Φ 75-71mm	圓邊蓋水樽 Round-edge Cap Bottle YD03  500ml; H: 200mm; Φ 70mm	圓邊蓋水樽 Round-edge Cap Bottle YD02  600ml; H: 200mm; Φ 73mm
直邊水樽 Sharp-edge Cap Bottle YF02  500ml; H: 195mm; Φ 68mm	翻蓋水樽 Flip Cap Bottle YB04  300ml; H: 154mm; Φ 64mm	翻蓋水樽 Flip Cap Bottle YB03  500ml; H: 180mm; Φ 74mm	翻蓋水樽 Flip Cap Bottle YB02  600ml; H: 200mm; Φ 72mm

細咀水樽 Small Lid Bottle YC03  500ml; H: 200mm; Φ 72mm	細咀水樽 Small Lid Bottle YC04  500ml; H: 233mm; Φ 63mm	細咀水樽 Small Lid Bottle YC05  700ml; H: 237mm; Φ 74mm	細咀水樽 Small Lid Bottle YC01  1Lit; H: 250mm; Φ 90mm
腰帶水樽 Waistband Bottle YH01  200ml; W78 x T35 x H26mm	拱形水樽 Arch Water Bottle YG01  900ml; H: 245mm; Φ 76mm	裝格水樽 Water Bottle with Container YI01  600ml; H: 250mm; Φ 75mm	吸管水樽 Straw Bottle YE02  600ml; H: 155mm; Φ 74mm





<p>軟帶手挽膠袋 Soft Loop Handle Bag</p> <p>LDPE / HDPE</p>	<p>衝孔手挽袋 Punch Hole Handle Bag</p> <p>LDPE / HDPE</p>
	
<p>叉耳膠袋 Plastic Loop Handle Bag</p> <p>LDPE / HDPE</p>	<p>掛勾膠袋 Plastic Hanger Bag</p> <p>Y3491</p> <p>LDPE / HDPE</p>
 <p>Plastic Loop Handle: PE</p>	 <p>L: 7" (18cm) , 8" (20cm) , 9" (23cm), 10" (25cm), 11" (28cm), 12" (31cm)</p>
<p>黏貼袋 Adhesive Bag</p> <p>LDPE, HDPE, PP or OPP</p>	<p>包裝膠袋 Packaging Bag</p> <p>LDPE, HDPE, PP or OPP</p>
 <p>多次性 / 一次性</p>	 <p>多次性 / 一次性</p>

<p>特大膠袋 / 垃圾袋 Large Plastic Bag / Bin Bag</p> <p>LDPE / HDPE</p>	
 <p>最大寬度為1.5米 單張為3米 The max. polybag width - up to 60" The max. polysheet width - up to 120"</p>	
<p>骨袋 / 密實袋 Ziplock Bag</p> <p>LDPE</p>	<p>拉伸膜 Pallet Wrap</p> <p>LLDPE</p>
	



可加環保劑，令塑料袋在數年內降解，從而達到環保效果。  
For environmental protection purpose, Bio-degradable substances can be added to increase the degradation speed into a few years time.



Index

Product no.	Page	Product no.	Page	Product no.	Page	Product no.	Page
Y-100	5	Y-189	13	Y-263	20	Y-376	18
Y-101	5	Y-190	7	Y-264	20	Y-381	17
Y-102	5	Y-191	7	Y-270	22	Y-382	17
Y-103	5	Y-192	7	Y-271	22	Y-383	17
Y-104	5	Y-193	7	Y-272	22	Y-384	17
Y-110	5	Y-194	7	Y-273	22	Y-431	33
Y-111	5	Y-195	7	Y-274	22	Y-432	33
Y-112	5	Y-196	7	Y-291	23	Y-433	33
Y-113	5	Y-197	7	Y-292	23	Y-434	33
Y-114	5	Y-200	27	Y-293	23	Y-435	33
Y-120	5	Y-201	27	Y-296	23	Y-436	33
Y-121	5	Y-202	27	Y-297	23	Y-437	33
Y-122	5	Y-203	27	Y-298	23	Y-438	33
Y-123	5	Y-204	27	Y-300	16	Y-439	33
Y-124	5	Y-205	27	Y-301	16	Y-450	30
Y-130	10	Y-206	27	Y-302	16	Y-451	30
Y-131	10	Y-207	27	Y-303	16	Y-452	31
Y-132	10	Y-208	27	Y-304	16	Y-453	30
Y-133	11	Y-211	21	Y-310	16	Y-454	29
Y-134	10	Y-212	21	Y-311	16	Y-455	30
Y-135	11	Y-213	21	Y-312	16	Y-456	30
Y-136	9	Y-214	21	Y-313	16	Y-457	30
Y-137	11	Y-220	22	Y-314	16	Y-458	31
Y-139	10	Y-221	22	Y-320	15	Y-459	30
Y-140	6	Y-222	22	Y-321	19	Y-460	30
Y-141	6	Y-223	22	Y-322	15	Y-476	32
Y-142	6	Y-224	22	Y-323	36	Y-477	32
Y-143	6	Y-230	25	Y-331	17	Y-478	32
Y-144	6	Y-231	25	Y-332	17	Y-479	32
Y-153	9	Y-232	25	Y-333	17	Y-480	32
Y-154	9	Y-233	25	Y-334	17	Y-481	32
Y-159	9	Y-234	25	Y-340	19	Y-482	32
Y-160	6	Y-237	26	Y-341	19	Y-483	32
Y-161	6	Y-238	26	Y-342	19	Y-484	32
Y-162	6	Y-239	26	Y-343	19	Y-485	32
Y-163	6	Y-240	20	Y-344	19	Y-486	32
Y-164	6	Y-241	20	Y-346	19	Y-487	32
Y-165	9	Y-242	20	Y-347	19	Y-488	32
Y-166	9	Y-243	20	Y-348	15	Y-489	32
Y-170	10	Y-244	20	Y-349	15	Y-491	30
Y-171	10	Y-246	28	Y-351	17	Y-492	29
Y-172	10	Y-247	28	Y-352	17	Y-493	31
Y-173	10	Y-251	22	Y-353	17	Y-494	31
Y-180	13	Y-252	22	Y-354	17	Y-495	31
Y-181	13	Y-253	22	Y-360	18	Y-496	30
Y-182	10	Y-254	22	Y-361	18	Y-497	31
Y-183	13	Y-255	23	Y-362	18	Y-498	31
Y-184	13	Y-257	23	Y-370	18	Y-499	31
Y-185	10	Y-258	35	Y-371	18	Y-501	52
Y-186	13	Y-260	20	Y-372	18	Y-502	52
Y-187	13	Y-261	20	Y-373	18	Y-503	52
Y-188	34	Y-262	20	Y-374	18	Y-504	51

Product no.	Page	Product no.	Page	Product no.	Page	Product no.	Page
Y-506	52	Y-640	37	Y-820	42	Y-934	50
Y-507	52	Y-641	37	Y-821	42	Y-935	50
Y-508	52	Y-642	12	Y-822	43	Y-936	50
Y-511	31	Y-643	37	Y-830	42	Y-937	50
Y-512	30	Y-644	37	Y-831	43	Y-940	50
Y-513	30	Y-645	12	Y-832	43	Y-941	50
Y-514	31	Y-646	37	Y-834	42	Y-960	48
Y-515	31	Y-647	37	Y-840	43	Y-961	48
Y-516	31	Y-648	37	Y-841	43	Y-970	48
Y-517	30	Y-650	35	Y-842	43	Y-980	48
Y-519	30	Y-660	24	Y-843	43	Y-1000	4
Y-550	51	Y-661	24	Y-844	41	Y-1002	4
Y-551	51	Y-662	24	Y-845	43	Y-1101	9
Y-554	29	Y-663	24	Y-846	43	Y-1102	9
Y-555	29	Y-671	35	Y-849	41	Y-1103	9
Y-574	29	Y-673	35	Y-850	43	Y-1105	8
Y-580	33	Y-675	36	Y-851	51	Y-1106	8
Y-581	32	Y-676	36	Y-853	53	Y-1107	8
Y-582	32	Y-677	36	Y-860	39	Y-1190	9
Y-583	33	Y-680	38	Y-861	39	Y-1191	9
Y-584	32	Y-681	38	Y-863	44	Y-1193	9
Y-585	33	Y-684	35	Y-864	44	Y-1200	4
Y-586	33	Y-685	35	Y-865	44	Y-1204	4
Y-587	33	Y-689	71	Y-866	39	Y-1605	6
Y-588	33	Y-690	47	Y-869	39	Y-1910	8
Y-589	33	Y-691	47	Y-900	55	Y-1911	8
Y-590	31	Y-692	47	Y-901	56	Y-1912	8
Y-592	31	Y-693	47	Y-902	48	Y-1913	8
Y-593	29	Y-698	70	Y-902	57	Y-2300	25
Y-594	31	Y-699	70	Y-903	60	Y-2321	25
Y-610	40	Y-700	14	Y-904	61	Y-2330	25
Y-611	40	Y-701	14	Y-905	62	Y-2421	20
Y-612	40	Y-703	14	Y-906	62	Y-3000	70
Y-613	40	Y-704	14	Y-907	63	Y-3001	70
Y-614	40	Y-710	12	Y-908	64	Y-3440	19
Y-615	40	Y-711	12	Y-909	65	Y-3442	15
Y-616	40	Y-712	12	Y-910	49	Y-3443	15
Y-620	40	Y-716	11	Y-911	49	Y-3490	71
Y-621	40	Y-720	12	Y-912	49	Y-3496	71
Y-622	40	Y-721	12	Y-913	45	Y-4001	34
Y-623	40	Y-731	29	Y-914	49	Y-4002	34
Y-624	41	Y-732	29	Y-915	46	Y-4100	34
Y-625	41	Y-740	14	Y-916	49	Y-5000	71
Y-626	40	Y-741	14	Y-917	49	Y-5001	71
Y-627	41	Y-750	26	Y-918	49	Y-9002	69
Y-628	41	Y-800	42	Y-919	45	Y-9003	68
Y-630	38	Y-801	42	Y-921	49	Y-9061	68
Y-631	38	Y-802	42	Y-922	49	Y-9190	46
Y-632	38	Y-803	43	Y-923	48	Y-9191	46
Y-633	38	Y-810	42	Y-930	50	Y-9192	46
Y-634	38	Y-813	42	Y-932	50	Y-9193	46
Y-635	38	Y-814	42	Y-933	50	Y-9194	46

Index





Index

Product no.	Page	Product no.	Page	Product no.	Page	Product no.	Page
Y- 9195	46	Y- 281A	21	Y- 619V	41	Y- 851A	44
Y- 10011	4	Y- 281A	23	Y- 621A	41	Y- 851B	44
Y- 1108	8	Y- 281B	21	Y- 623A	40	Y- 852A	53
Y- 1201A	4	Y- 281D	21	Y- 627A	41	Y- 852B	53
Y- 1203A	4	Y- 282A	21	Y- 628A	41	Y- 852C	53
Y- 160A	6	Y- 283A	21	Y- 629A	41	Y- 853A	53
Y- 161A	6	Y- 284A	21	Y- 630A	38	Y- 860A	39
Y- 162A	6	Y- 295A	23	Y- 631A	38	Y- 860B	39
Y- 163A	6	Y- 296A	23	Y- 632A	38	Y- 860C	39
Y- 164A	6	Y- 302A	16	Y- 632B	38	Y- 860D	39
Y- 165B	4	Y- 313A	18	Y- 632CL	38	Y- 860E	39
Y- 166B	4	Y- 3300B	16	Y- 633A	38	Y- 860F	39
Y- 167B	4	Y- 330A	18	Y- 671B	35	Y- 900A	55
Y- 183B	13	Y- 330B	16	Y- 671F	36	Y- 900A3	55
Y- 185B	10	Y- 331B	16	Y- 672F	36	Y- 900B	55
Y- 186A	13	Y- 333B	16	Y- 673A	35	Y- 900BE	56
Y- 195A	7	Y- 333C	18	Y- 673C	35	Y- 901A	56
Y- 196A	7	Y- 342A	19	Y- 673F	36	Y- 901B	56
Y- 197A	7	Y- 342B	19	Y- 674A	36	Y- 901C	57
Y- 198A	7	Y- 342D	19	Y- 674F	36	Y- 902A	57
Y- 202A	28	Y- 342E	19	Y- 674F	36	Y- 902B	57
Y- 205A	27	Y- 345A	15	Y- 675A	36	Y- 902BK	58
Y- 206A	27	Y- 345A	19	Y- 679A	36	Y- 902C	58
Y- 206B	27	Y- 345B	19	Y- 690A	47	Y- 902CE	58
Y- 206C	27	Y- 347A	19	Y- 690B	47	Y- 902DE	59
Y- 220A	21	Y- 373A	18	Y- 691A	47	Y- 902DF	59
Y- 221B	20	Y- 433A	34	Y- 691B	47	Y- 902E	58
Y- 222B	20	Y- 435A	34	Y- 700A	14	Y- 902ED	59
Y- 223B	20	Y- 436B	34	Y- 702A	14	Y- 902G	59
Y- 224A	22	Y- 460A	30	Y- 705A	36	Y- 902H	60
Y- 2300C	26	Y- 479A	32	Y- 731A	29	Y- 902J	60
Y- 2300F	25	Y- 501A	53	Y- 830A	42	Y- 902M	66
Y- 2301F	25	Y- 503A	53	Y- 830B	42	Y- 902R	60
Y- 2302F	25	Y- 503B	52	Y- 833A	42	Y- 904A	61
Y- 2303F	25	Y- 503C	52	Y- 833A	42	Y- 904B	61
Y- 231A	25	Y- 503D	53	Y- 833B	42	Y- 904C	61
Y- 232A	25	Y- 503E	52	Y- 833C	42	Y- 904D	62
Y- 233A	25	Y- 504A	51	Y- 844A	41	Y- 904F	62
Y- 233B	26	Y- 507A	51	Y- 844B	41	Y- 906A	63
Y- 233E	26	Y- 508A	51	Y- 844C	41	Y- 906A4	63
Y- 236A	26	Y- 508B	51	Y- 844D	41	Y- 906B2	66
Y- 236A	26	Y- 508F	52	Y- 845A	43	Y- 906B3	66
Y- 237A	26	Y- 509B	52	Y- 847A	44	Y- 906C2	67
Y- 241A	20	Y- 509C	52	Y- 847B	44	Y- 906C3	67
Y- 253A	22	Y- 509D	52	Y- 847C	44	Y- 906D2	67
Y- 2604B	4	Y- 509E	52	Y- 847D	44	Y- 906D3	67
Y- 270A	21	Y- 515A	29	Y- 847E	44	Y- 906E2	67
Y- 270B	22	Y- 580A	33	Y- 847F	44	Y- 906E3	67
Y- 280A	21	Y- 600RW	51	Y- 847G	44	Y- 906F2	68
Y- 280A	23	Y- 601RW	51	Y- 847H	44	Y- 906F3	68
Y- 280B	21	Y- 611A	40	Y- 847K	44	Y- 906G2	68
Y- 280C	21	Y- 613A	40	Y- 847L	44	Y- 906G3	68

Index

Product no.	Page	Product no.	Page
Y- 906H2	67	YH-01	75
Y- 906H3	67	YI-01	75
Y- 907A	63	YW-050	53
Y- 908A	64	YW-058	53
Y- 908B	64	YW-068	53
Y- 908C	64	YW-100	53
Y- 908D	65	YW-68A	53
Y- 909A	65	YW-68B	53
Y- 909B	65	FLAG001	73
Y- 909C	66	FLAG002	72
Y- 909D	66	FLAG003	72
Y- 915A	46	FLAG004	73
Y- 915B	46	FLAG006	73
Y- 915C	46	FLAG007	73
Y- 915D	46	FLAG008	73
Y- 915E	46	FLAG009	72
Y- 915F	46	FLAG010	72
Y- 915H	46	FLAG011	73
Y- 916A	49	FLAG013	73
Y- 919A	45	FLAG014	73
Y- 919B	45	FLAG015	73
Y- 919C	45	FLAG016	73
Y- 919D	45	FLAG017	73
Y- 919E	45	FLAG018	73
Y- 919F	45	FLAG002+004+001	72
Y- 919G	46	FLAG003+004+001	72
Y- 919H	45	FLAG004+001+002	72
Y- 920A	48	FLAG005A	72
Y- 920B	48	FLAG005B	72
Y- 921A	49	FLAG012-1	72
Y- 960A	48	FLAG012-2	72
Y- 960B	48	FLAG012-3	72
Y- 960C	48	Soft Loop Handle Bag -	76
Y- 980A	48	LDPE / HDPE	
YA-02	74	Punch Hole Handle Bag -	76
YA-03	74	LDPE / HDPE	
YA-04	74	Plastic Loop Handle Bag -	76
YA-05	74	LDPE / HDPE	
YA-06	74	Plastic Hanger Bag -	76
YA-07	74	LDPE / HDPE Y3491	
YB-02	74	Adhesive Bag -	76
YB-03	74	LDPE, HDPE, PP or OPP	
YB-04	74	Packaging Bag -	76
YC-01	75	LDPE, HDPE, PP or OPP	77
YC-03	75	Large Plastic Bag / Bin Bag -	
YC-04	75	LDPE / HDPE	
YC-05	75	Ziplock Bag - LDPE	77
YD-02	74	Pallet Wrap - LLDPE	77
YD-03	74		
YE-02	75		
YF-02	74		
YG-01	75		



## 主要材質之特性與用途一覽表 Characters and Applicable Fields

材質名稱 Material	比重 Specific Gravity	熱變形溫度 Thermodeformed Temperature	燃燒性 Flameability	特性 Character 優點 Advantages	特性 Character 缺點 Disadvantages	用途 Applicable Usage	材質名稱 Material	比重 Specific Gravity	熱變形溫度 Thermodeformed Temperature	燃燒性 Flameability	特性 Character 優點 Advantages	特性 Character 缺點 Disadvantages	用途 Applicable Usage
POM	1.41~1.43	Homopolymer 160~170°C	可燃性 Flameable	<ol style="list-style-type: none"> <li>1. 強韌，富彈性</li> <li>2. CLIP特性，耐疲勞性特優</li> <li>3. 具自潤性，摩擦抵抗小</li> <li>4. 耐藥品性</li> <li>5. 耐熱性優</li> </ol>	<ol style="list-style-type: none"> <li>1. 抗紫外線弱</li> <li>2. 熱分解即產生福馬林氣體</li> <li>3. 抗強酸力弱</li> </ol>	<ol style="list-style-type: none"> <li>1. 須負荷重之工業品部品 (GEAR, CAM, SPRING)</li> <li>2. 汽車、電器制品</li> <li>3. 玩具部品</li> <li>4. 金屬的代替品</li> </ol>	PE	HDPE 0.95~0.96 LDPE 0.91~0.92	60~82°C (4.6kg/cm <sup>2</sup> ) 41~49°C (4.6kg/cm <sup>2</sup> )	可燃性 Flameable	<ol style="list-style-type: none"> <li>1. 耐寒性優</li> <li>2. 衛生無毒</li> <li>3. 耐水性、耐藥品性優</li> <li>4. 電氣性特優</li> <li>5. 柔軟性優 (LDPE)</li> </ol>	<ol style="list-style-type: none"> <li>1. 耐熱性劣</li> <li>2. 耐候性劣</li> <li>3. 成形收縮大</li> </ol>	<ol style="list-style-type: none"> <li>1. 各種容器</li> <li>2. 包裝袋</li> <li>3. 玩具類</li> <li>4. 廚房用品</li> <li>5. 機械部品</li> </ol>
PA	PA6 1.12~1.14 PA66 1.13~1.15	127~171°C (4.6kg/cm <sup>2</sup> ) 149~182°C (4.6kg/cm <sup>2</sup> )	自消性 Self-Extinguishable	<ol style="list-style-type: none"> <li>1. 強韌，耐衝擊</li> <li>2. 具自潤性，摩擦抵抗小</li> <li>3. 耐熱性，耐寒性優</li> <li>4. 耐藥性、耐油性優</li> </ol>	<ol style="list-style-type: none"> <li>1. 吸水性大，缺乏尺寸安全性</li> <li>2. 抗強酸力弱</li> </ol>	<ol style="list-style-type: none"> <li>1. 在機械部品 (foldable parts, gears, axes, etc.)</li> <li>2. 汽車、電器制品</li> <li>3. Fasteners</li> <li>4. Hoses, nuts, tubes</li> <li>5. Machinery parts (foldable parts, gears, axes, etc.)</li> <li>6. Automobiles, electric appliances</li> <li>7. Fasteners</li> <li>8. Hoses, nuts, tubes</li> </ol>	ABS	0.99~1.10	95~112°C (4.6kg/cm <sup>2</sup> )	可燃性 Flameable	<ol style="list-style-type: none"> <li>1. 外觀物性佳，價格合理</li> <li>2. 電鍍特性優</li> <li>3. 在低溫時耐衝擊性優</li> <li>4. 成形收縮率小，尺寸精度優</li> <li>5. 抗酸、鹼性優</li> </ol>	<ol style="list-style-type: none"> <li>1. 耐候性劣</li> <li>2. 可溶於溶劑</li> </ol>	<ol style="list-style-type: none"> <li>1. 工業部品 (相機部品，樂器部)</li> <li>2. 電氣機器用品</li> <li>3. 自動車部品</li> <li>4. 日用品</li> </ol>
PP	0.90~0.92	99~110°C (4.6kg/cm <sup>2</sup> )	可燃性 Flameable	<ol style="list-style-type: none"> <li>1. HINGE特性特優</li> <li>2. 耐熱性優</li> <li>3. 塑膠中最輕者</li> <li>4. 電氣特性優</li> <li>5. 耐藥品性優</li> </ol>	<ol style="list-style-type: none"> <li>1. 低溫時的耐衝擊性劣</li> <li>2. 耐候性不佳</li> </ol>	<ol style="list-style-type: none"> <li>1. 各種容器 (耐熱用)</li> <li>2. HINGE 形成品</li> <li>3. 玩具類</li> <li>4. FILM, SHEET</li> <li>5. 板, pipe</li> <li>6. 耐熱的工業用品</li> </ol>	PS	1.03~1.07	82~104°C (4.6kg/cm <sup>2</sup> )	可燃性 Flameable	<ol style="list-style-type: none"> <li>1. 成形性佳</li> <li>2. 剛性佳，表面硬度大</li> <li>3. 透明性優</li> <li>4. 電氣性特優</li> <li>5. 抗酸、鹼性優</li> </ol>	<ol style="list-style-type: none"> <li>1. 耐衝擊性劣</li> <li>2. 耐熱性、耐候性劣</li> <li>3. 可溶於溶劑</li> </ol>	<ol style="list-style-type: none"> <li>1. 日用雜貨品</li> <li>2. 電器部品</li> <li>3. 玩具類</li> <li>4. 看板</li> <li>5. 文具</li> </ol>
PVC	H PVC 1.16~1.45 S PVC 1.32~1.7	62~72°C (4.6kg/cm <sup>2</sup> )	自消性 Self-Extinguishable	<ol style="list-style-type: none"> <li>1. 柔軟程度可自由造整</li> <li>2. 硬且強韌 (H)</li> <li>3. 耐候性優</li> <li>4. 耐水性、耐藥品性優</li> <li>5. 價格便宜</li> </ol>	<ol style="list-style-type: none"> <li>1. 耐熱、耐寒性劣</li> <li>2. 耐衝擊性劣</li> <li>3. 耐彎曲性劣</li> </ol>	<ol style="list-style-type: none"> <li>1. Pipe 及配管零件</li> <li>2. 電線覆皮</li> <li>3. 鞋類</li> <li>4. 工業部品，特殊化學部品</li> <li>5. FILM, SHEET, LEATHER</li> <li>6. 橡膠的代替品</li> </ol>	TPE	1.15~1.24	Soften Point 100~160°C	可燃性 Flameable	<ol style="list-style-type: none"> <li>1. 軟質手感佳彈性優</li> <li>2. 耐候性優、耐寒性可達 -40°C</li> </ol>	<ol style="list-style-type: none"> <li>1. 配色不易</li> </ol>	<ol style="list-style-type: none"> <li>1. 緩衝、消音、吸震等產品</li> <li>2. 鞋類、運動用品</li> <li>3. 家電、電器類、腳墊及絕緣材料</li> </ol>
				<ol style="list-style-type: none"> <li>1. Softness being regulated freely</li> <li>2. Rigid and toughness</li> <li>3. Excellent in weather resistance</li> <li>4. Excellent in water &amp; chemical resistance</li> <li>5. Cheap in cost</li> </ol>	<ol style="list-style-type: none"> <li>1. Inferior in heat resistance and cold resistance</li> <li>2. Inferior in impact resistance</li> <li>3. Inferior in flexibility</li> </ol>	<ol style="list-style-type: none"> <li>1. Pipes and fittings</li> <li>2. Wrap for wire</li> <li>3. Shoes(s)</li> <li>4. Industrial parts, sprcial chemistry parts (H)</li> <li>5. FILM, SHEET, LEATHER</li> <li>6. Rubber Substitutes</li> </ol>				<ol style="list-style-type: none"> <li>1. Excellent in moldability</li> <li>2. Excellent in rigid, high hardness on surfacer</li> <li>3. Excellent in transparency</li> <li>4. Excellent in electric property</li> <li>5. Excellent in acid and base resistance</li> </ol>	<ol style="list-style-type: none"> <li>2. Inferior in thermo and weather resistance</li> <li>3. Soluble in solvent</li> </ol>	<ol style="list-style-type: none"> <li>2. Parts for electric appliances</li> <li>3. Toys</li> <li>4. Bulletin boards</li> <li>5. Stationery</li> </ol>	





# 國際安全標準 International Safety Standards

## RoHS Standard

The Directive on the restriction of the use of certain hazardous substances in electrical and electronic equipment 2002/95/EC (commonly referred to as the Restriction of Hazardous Substances Directive or RoHS) was adopted in February 2003 by the European Union. The RoHS directive took effect on 1 July 2006, and is required to be enforced and become law in each member state. This directive restricts the use of six hazardous materials in the manufacture of various types of electronic and electrical equipment.

RoHS is often referred to as the lead-free directive, but it restricts the use of the following six substances:

1. Lead (Pb)
2. Mercury (Hg)
3. Cadmium (Cd)
4. Hexavalent chromium (Cr6+)
5. Polybrominated biphenyls (PBB)
6. Polybrominated diphenyl ether (PBDE)

PBB and PBDE are flame retardants used in several plastics.

## REACH Standard

Registration, Evaluation, Authorisation and Restriction of Chemicals (REACH), EC1907/2006 is a European Union Regulation of 18 December 2006. REACH addresses the continued use of chemical substances of very high concern (SVHC) because of their potential negative impacts on human health or the environment. From 1 June 2011, the European Chemicals Agency must be notified of the presence of SVHCs in articles if the total quantity used is more than one tonne per year and the SVHC is present at more than 0.1% of the mass of the object. Some uses of SVHCs may be subject to prior authorisation from the European Chemicals Agency, and applicants for authorisation will have to include plans to replace the use of the SVHC with a safer alternative (or, if no safer alternative exists, the applicant must work to find one) - known as substitution. As of June 2012[update], there are 84 SVHCs.

## Phthalate Free

EU overview:

The EU banned the use of 6 phthalate esters in toys and children's products that might be potentially placed in the mouth, at levels greater than 0.1% of the total object weight on January 16, 2007. The phthalates subject to this regulation are:

- Di-2-ethylhexyl phthalate (DEHP, DOP)
- Dibutyl phthalate (DBP)
- Butyl benzyl phthalate (BBP)
- Di-isononyl phthalate (DINP)
- Di-isodecyl phthalate (DIDP)
- Di-n-octyl phthalate (DNOP)

The EU has also applied limitations to the use of these phthalates in general food contact applications (packaging and closures) and medical device applications. In addition, several phthalates have been listed as "Substances of Very High Concern" (SVHC) requiring reporting of their content in articles exported into the EU under the REACH regulations:

- Di-butyl phthalate (DBP)
- Di-2-ethylhexyl phthalate (DEHP, DOP)
- Butyl benzyl phthalate (BBP)

Manufacturers contemplating export of phthalate containing compounds or articles to EU members should acquaint themselves with the specifics of these and other EU regulatory requirements.

United States overview:

In the United States, on August 14, 2008 the Consumer Product Safety Improvement Act (CPSIA) incorporated regulation of phthalate esters as components of children's toys and child care articles for children under the age of 12 that could be "placed in the mouth".

For CPSIA purposes, the following phthalates were permanently banned at levels greater than 0.1%:

- Di-2-ethylhexyl phthalate (DEHP, DOP)
- Dibutyl phthalate (DBP)
- Butyl benzyl phthalate (BBP)

The CPSIA also imposed an interim ban on the use of the following phthalates at levels greater than 0.1% pending the results of further CPSC (Consumer Product Safety Commission) review:

- Di-isononyl phthalate (DINP)
- Di-isodecyl phthalate (DIDP)
- Di-n-octyl phthalate (DNOP)

The CPSIA also contains a number of other provisions regulating other chemical content of toys, prohibition of the sale of non-compliant materials after February 10, 2009, analysis requirements, and other standards. Anyone engaged in production or sale of toys or child care products should thoroughly acquaint themselves with all the provisions of this legislation.



RoHS Standard



REACH Standard



EN71 Standard



Phthalate Free Standard

## FDA Standard

The Food and Drug Administration (FDA or USFDA) is an agency of the United States Department of Health and Human Services, one of the United States federal executive departments. The FDA is responsible for protecting and promoting public health through the regulation and supervision of food safety, tobacco products, dietary supplements, prescription and over-the-counter pharmaceutical drugs (medications), vaccines, biopharmaceuticals, blood transfusions, medical devices, electromagnetic radiation emitting devices (ERED), and veterinary products. The FDA also enforces other laws, notably Section 361 of the Public Health Service Act and associated regulations, many of which are not directly related to food or drugs. These include sanitation requirements on interstate travel and control of disease on products ranging from certain household pets to sperm donation for assisted reproduction.

## EN71 Standard

European standard EN 71 specifies safety requirements for toys. Compliance with the standard is legally required for all toys sold in the European Union.

The standard has been published in 11 parts:

- EN 71-1: Mechanical and physical properties
- EN 71-2: Flammability
- EN 71-3: Specification for migration of certain elements
- EN 71-4: Experimental sets for chemistry and related activities
- EN 71-5: Chemical toys (sets) other than experimental sets
- EN 71-6: Graphical symbols for age warning labelling
- EN 71-7: Finger paints
- EN 71-8: Swings, slides and similar activity toys for indoor and outdoor family domestic use
- EN 71-9: Organic chemical compounds – Requirement
- EN 71-10: Organic chemical compounds – Sample preparation and extraction
- EN 71-11: Organic chemical compounds – Methods of analysis



FDA Standard





有興(香港)有限公司  
YAU HING (HK) CO. LTD

**YAU HING (HONG KONG) COMPANY LIMITED**

有興(香港)有限公司

FLAT 1905, CRE CENTRE 889 CHEUNG SHA WAN ROAD  
KOWLOON, HONG KONG

香港九龍長沙灣道889號華創中心1905室

Tel 電話: (+852) 2960 0243

Fax 傳真: (+852) 2805 5961

E-mail 電郵: info@8yauhing.com.hk

**YAU HING PLASTIC PRODUCTS (SHENZHEN) COMPANY LIMITED**

有興塑膠製品(深圳)有限公司

NO.103-1, NO.103-2, HONGHU ROAD,  
YANCHUAN NO.4 INDUSTRIAL PARK,  
SONGGANG SUB-DISTRICT, BAO'AN DISTRICT,  
SHENZHEN, GUANGDONG PROVINCE, P.R. CHINA.

POSTCODE: 518105

深圳市寶安區松崗街道燕川第四工業區紅湖路103-1號, 郵編518105

Tel 電話: +86 (0)755 2755 6100 (6 lines)

Fax 傳真: +86 (0)755 2707 1031 (2 lines)

E-mail 電郵: yauhing@163.com

[www.yauhing.net](http://www.yauhing.net) | [yauhing.en.alibaba.com](http://yauhing.en.alibaba.com) | [yauhing.gmc.globalmarket.com](http://yauhing.gmc.globalmarket.com)



ISO9001:2008 04911011232R0M



G&C20111559

